

ABBREVIATIONS / LEGEND

AHD. - AHEAD	PKWY. - PARKWAY
BK. - BACK	d - PENNY
B - BASELINE	P.B. - PLAT BOOK
C - CENTERLINE	(P) - PLAT DATA
C.C.R. - CERTIFIED CORNER RECORD	PAV'T. - PAVEMENT
Δ - CENTRAL/DEFLECTION ANGLE	P.C.C. - POINT OF COMPOUND CURVATURE
CHS. - CHAINS	P.C.P. - PERMANENT CONTROL POINT
C.B. - CHORD BEARING	P.C. - POINT OF CURVATURE
C - CHORD DISTANCE	P.I. - POINT OF INTERSECTION
(C) - COMPUTED DATA	ℓ - PROPERTY LINE
CONC - CONCRETE	P.R.C. - POINT OF REVERSE CURVATURE
CONC. MON. - CONCRETE MONUMENT	P.T. - POINT OF TANGENCY
CONST. - CONSTRUCTION	P.O.L. - POINT ON LINE
COR. - CORNER	P.O.T. - POINT ON TANGENT
C.R. - COUNTY ROAD	P.B.S. & J. - POST, BUCKLEY, SCHUH & JERNIGAN
(D) - DEED DATA	(PR.) - PRORATED
D.I.P. - DUCTILE IRON PIPE	P.R.M. - PERMANENT REFERENCE MONUMENT
E. - EAST	P.V.C. - POLY VINYL CHLORIDE
EASM'T. - EASEMENT	R - RADIUS
EXIST. - EXISTING	R.C.P. - REINFORCED CONCRETE PIPE
(F) - FIELD DATA	R.R. - RAILROAD
F.D.O.T. - FLORIDA DEPARTMENT OF TRANSPORTATION	RGE. - RANGE
F.P. NO. - FINANCIAL PROJECT NUMBER	REC. - RECOVERED
F.P.C. - FLORIDA POWER CORPORATION	RT. - RIGHT
H. & R. - HENNIGAR & RAY ENGINEERING	R/W - RIGHT OF WAY
HEX. - HEXAGONAL	SEC. - SECTION
I.D. - IDENTIFICATION	S. - SOUTH
I.R. & C. - IRON ROD & CAP	S.E.S. - SOUTHEASTERN SURVEYING
J.W.G. - JONES, WOOD & GENTRY	S.R. - STATE ROAD
L - ARC LENGTH	S.R.D. - STATE ROAD DEPARTMENT
L.O.C. - LIMITS OF CONSTRUCTION	STA. - STATION
L.S. - LAND SURVEYOR NUMBER	T - TANGENT
LT. - LEFT	T.B. - TANGENT BEARING
L.B. - LAND SURVEYING BUSINESS	T.C. - TANGENT TO CURVE
L.A. - LIMITED ACCESS	TEMP. - TEMPORARY
LKS. - LINKS	TWP. - TOWNSHIP
N. - NORTH	TYP. - TYPICAL
N/A - NOT APPLICABLE	U.S. - UNITED STATES
N.T.S. - NOT TO SCALE	W.R.A. - WATER RETENTION AREA
# - NUMBER	W. - WEST
NO. - NUMBER	
OCT. - OCTAGONAL	
O.R.B. - OFFICIAL RECORDS BOOK	
O.U.C. - ORLANDO UTILITIES COMMISSION	
PG. - PAGE	

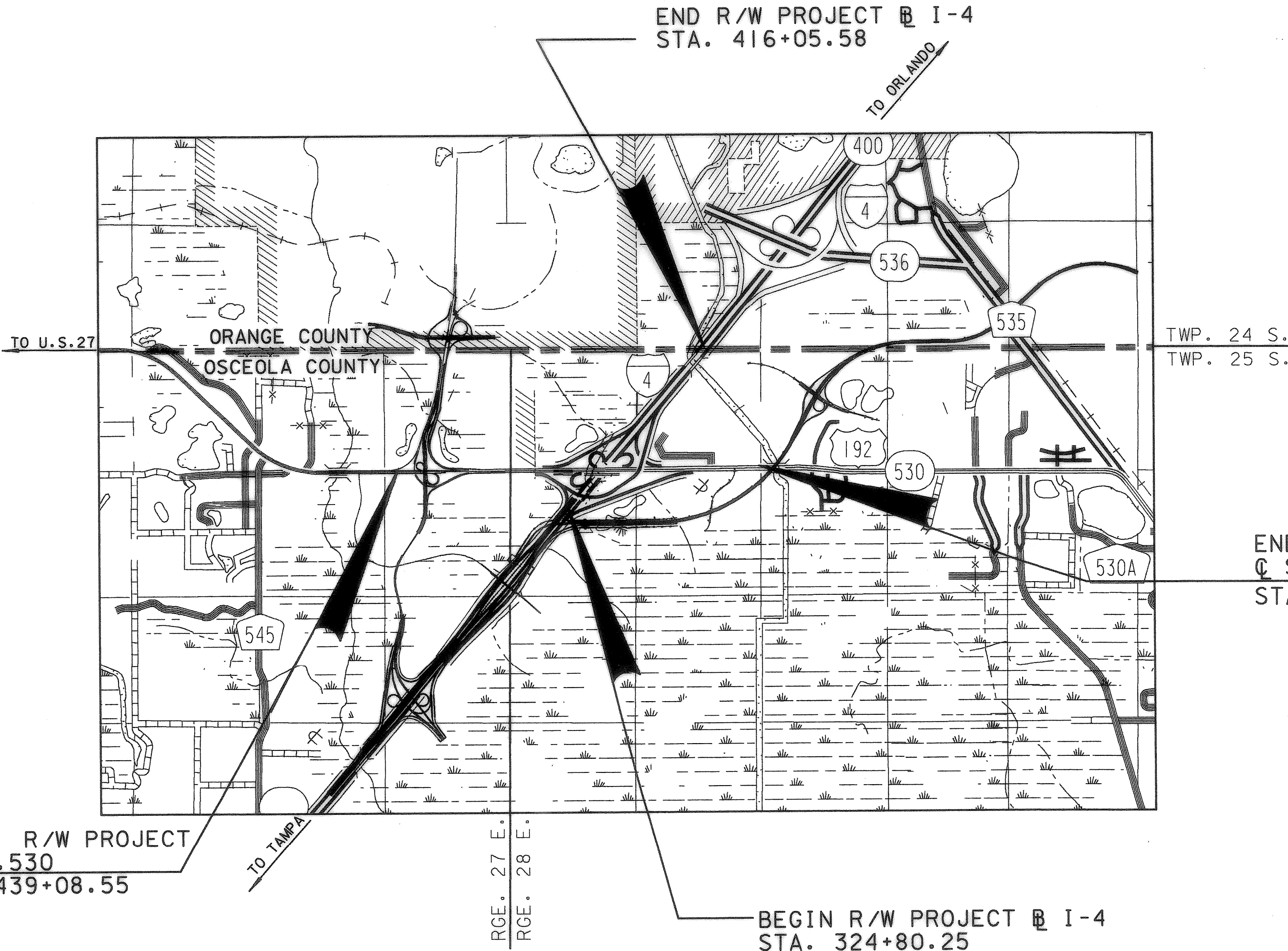
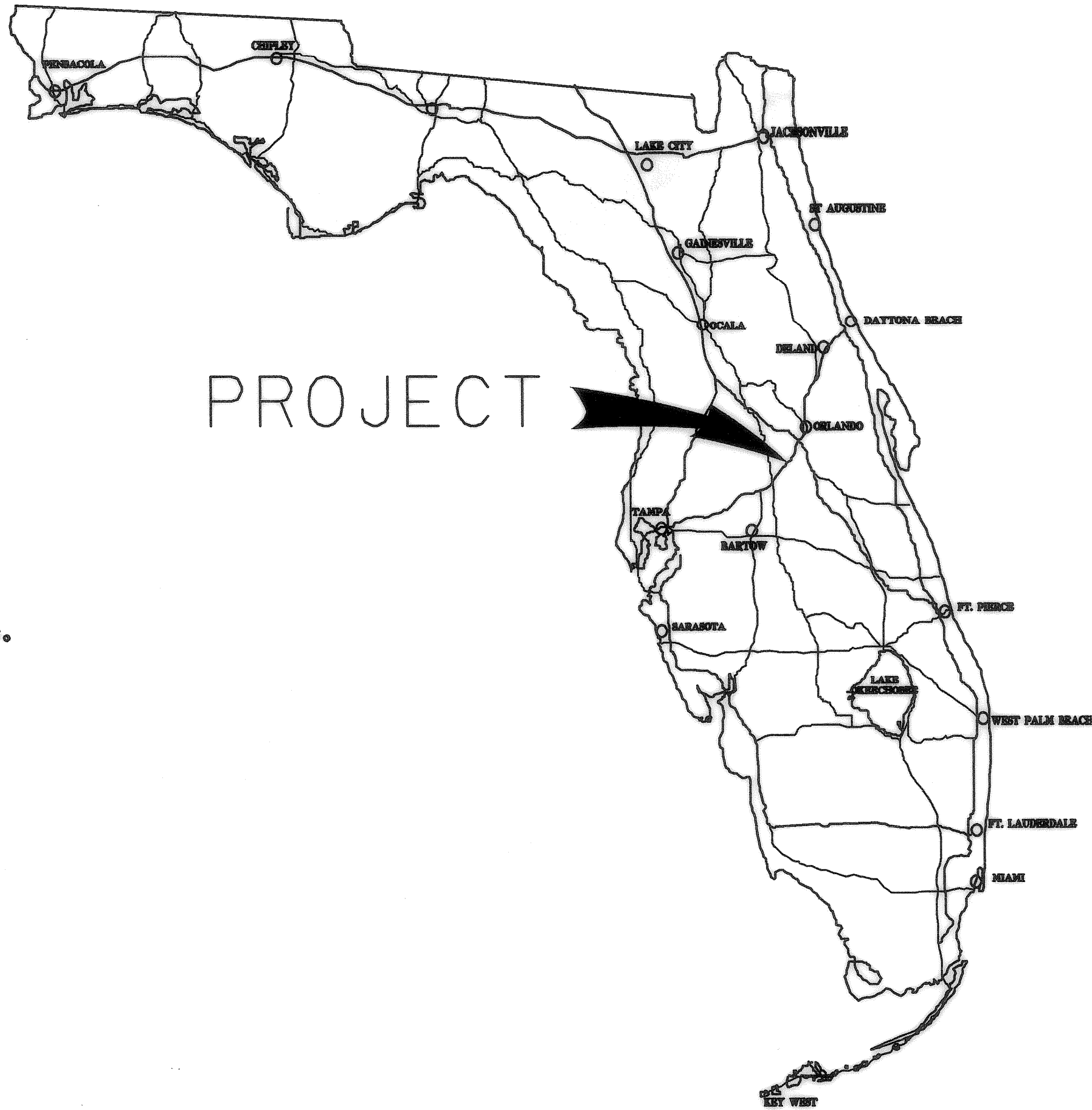
GENERAL NOTES:

1. THE BEARINGS AND COORDINATES SHOWN HEREON ARE BASED ON THE FLORIDA STATE PLANE COORDINATE SYSTEM, EAST ZONE, 1983 NORTH AMERICAN DATUM, 1990 ADJUSTMENT, AS ESTABLISHED FROM A ROUNDED BEARING OF N 40°07'54" E ON THE BASELINE OF SURVEY BETWEEN STATION 324+80.25 AND P.I. STATION 401+54.14.
2. THE CURVE DATA (TANGENT & LENGTH) AND THE CENTERLINE OF SURVEY STATIONING HAS BEEN CALCULATED BASED ON THE CENTRAL ANGLE OF THE CURVES EXPRESSED TO ONE-TENTH (00.0") OF A SECOND, AS DERIVED FROM THE COORDINATE VALUES FOR THE POINT OF INTERSECTION (P.I.) OF SAID CURVES. THE CENTRAL ANGLE OF THE CURVES AND ALL BEARINGS SHOWN HEREON HAVE BEEN ROUNDED TO THE NEAREST SECOND (00") PER FLORIDA DEPARTMENT OF TRANSPORTATION MAPPING STANDARDS.
3. UNLESS OTHERWISE NOTED ALL THE DATA DESIGNATED AS (F) IS THE RESULT OF DIRECT FIELD MEASUREMENTS, CALCULATED FROM A CLOSED FIELD TRAVERSE OR CALCULATED FROM REDUNDANT FIELD MEASUREMENTS.
4. THE EXISTING RIGHT OF WAY LINES AS SHOWN HEREON ARE BASED ON FLORIDA DEPARTMENT OF TRANSPORTATION RIGHT OF WAY MAP, SECTION NO.'S 97922-2300, 01, 02 STATE ROAD DEPARTMENT RIGHT OF WAY MAP, SECTION NO.'S 92130-2401, 92090-2502 AND URS BOUNDARY SURVEY OF OSCEOLA PARKWAY MAP V100000370.03, PERFORMED BY RUSSELL J. MARKS, P.S.M. # 5623 ON JUNE 26, 2001. RECORD TITLE OR PLAT DEDICATION, UNLESS SPECIFICALLY SHOWN OTHERWISE.
5. THIS RIGHT OF WAY MAP IS SUPPORTED BY DATA CONTAINED IN ELECTRONIC MEDIA FILE 14192.ARC AND FIELD BOOKS NUMBERED 2316221, 2003001, 2316101, 2316102, 21234, 21235, 21236, 21237, 21238 & 21239. THIS DATA IS FILED IN THE LOCATION SURVEY SECTION OF THE FLORIDA DEPARTMENT OF TRANSPORTATION DISTRICT FIVE OFFICE, IN DELAND, FLORIDA.
6. THIS RIGHT OF WAY MAP IS SUPPORTED BY A RIGHT OF WAY CONTROL SURVEY DATED DECEMBER 4, 2001, PREPARED UNDER THE RESPONSIBLE CHARGE OF RUSSELL J. MARKS PROFESSIONAL LAND SURVEYOR AND MAPPER NUMBER 5623. CERTIFIED COPIES OF THIS SURVEY ARE FILED OF RECORD IN THE DISTRICT 5 OFFICE IN DELAND, FLORIDA.
7. PROPERTY BOUNDARIES DETERMINED FROM FIELD SURVEY, PLATS OF RECORD AND RECORD TITLE.
8. ATTENTION IS DIRECTED TO THE FACT THESE MAPS MAY HAVE BEEN ALTERED IN SIZE BY REPRODUCTION. THIS MUST BE CONSIDERED WHEN OBTAINING SCALED DATA.
9. UNDERGROUND FOUNDATION ENCROACHMENTS NOT LOCATED.
10. RIGHT OF WAY MONUMENTS TO BE SET AFTER CONSTRUCTION OF PROJECT IS COMPLETE.
11. ONLY FIXED IMPROVEMENTS PERTINENT TO THE PARCELS TO BE ACQUIRED ARE SHOWN. FIXED INTERIOR IMPROVEMENTS NOT LOCATED.
12. THIS RIGHT OF WAY MAP WAS PREPARED FOR THE PURPOSE OF PREPARING LEGAL LAND DESCRIPTIONS, ACQUISITION DOCUMENTS, MONUMENTATION, PROPERTY MANAGEMENT, AND AS AN AID IN THE APPRAISAL OF THE RIGHT OF WAY REQUIRED FOR TRANSPORTATION FACILITIES.

STATE OF FLORIDA
DEPARTMENT OF TRANSPORTATION

MAPS OF THE
STATE HIGHWAY
RIGHT OF WAY MAP

STATE ROAD NO. 400
TWP. 25 S., RGE. 27 E. & TWP. 25 S., RGE. 28 E.
F.P. NO. 242531 1
W.P.I. NO. 5147335
STATE PROJECT SECTION NO. 92130
OSCEOLA COUNTY

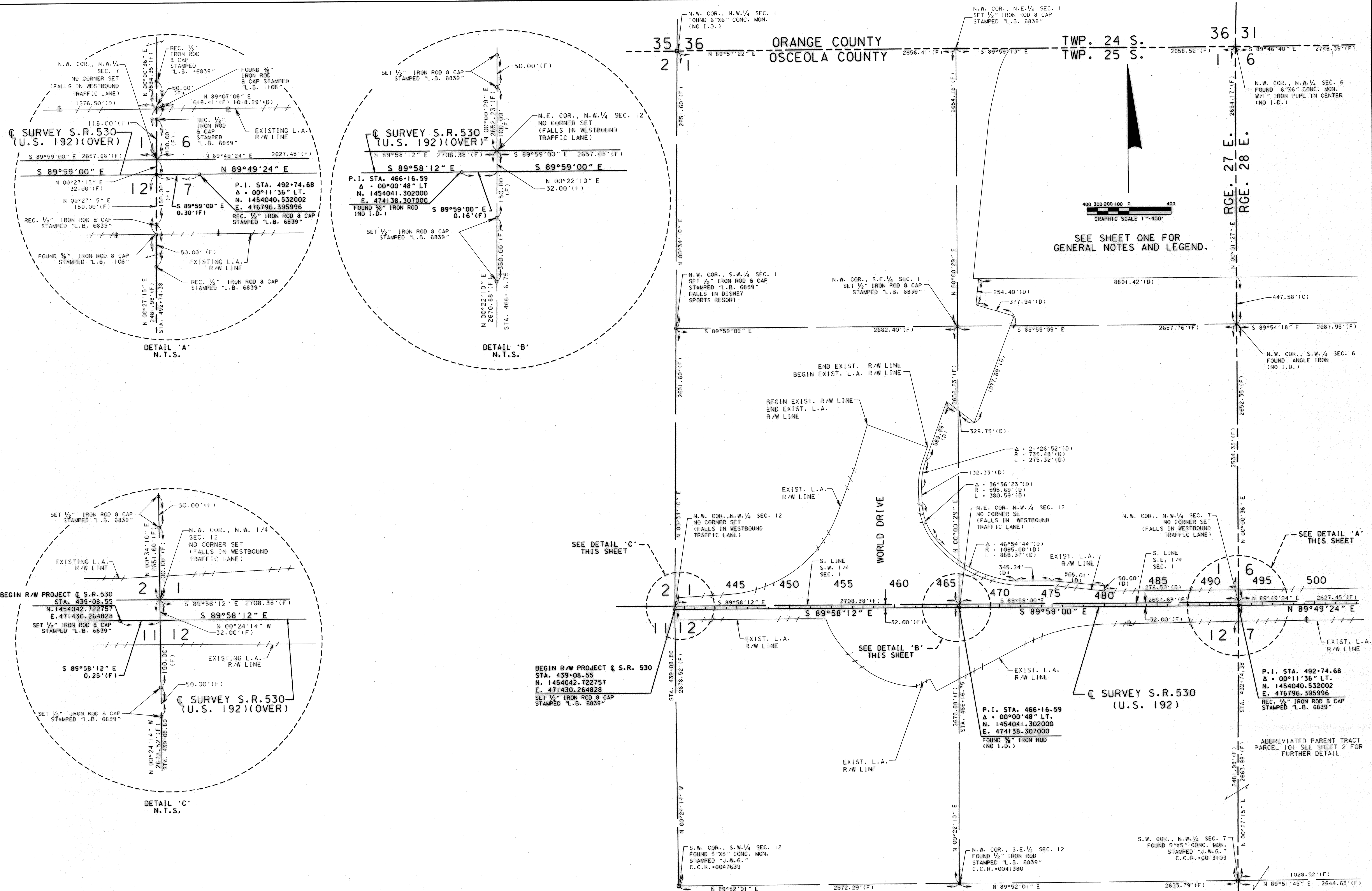


N.T.S.

THIS MAP IS NOT A SURVEY

RIGHT OF WAY MAP	FLORIDA DEPARTMENT OF TRANSPORTATION RIGHT OF WAY MAPPING	APPROVED BY <i>Deborah Mott</i> FOR DISTRICT SECRETARY	DATE 4-28-02																																																																																																																																																																																																																																																																																																																																																																																																																																																																																																																																																																																																																																																																																																																																																																																																																																																																																																																																																																																																																																																																																																																																																																																																																																																																																																																																																																																																																																							
------------------	--	--	-----------------	--	--	--	--	--	--	--	--	--	--	--	--	--	--	--	--	--	--	--	--	--	--	--	--	--	--	--	--	--	--	--	--	--	--	--	--	--	--	--	--	--	--	--	--	--	--	--	--	--	--	--	--	--	--	--	--	--	--	--	--	--	--	--	--	--	--	--	--	--	--	--	--	--	--	--	--	--	--	--	--	--	--	--	--	--	--	--	--	--	--	--	--	--	--	--	--	--	--	--	--	--	--	--	--	--	--	--	--	--	--	--	--	--	--	--	--	--	--	--	--	--	--	--	--	--	--	--	--	--	--	--	--	--	--	--	--	--	--	--	--	--	--	--	--	--	--	--	--	--	--	--	--	--	--	--	--	--	--	--	--	--	--	--	--	--	--	--	--	--	--	--	--	--	--	--	--	--	--	--	--	--	--	--	--	--	--	--	--	--	--	--	--	--	--	--	--	--	--	--	--	--	--	--	--	--	--	--	--	--	--	--	--	--	--	--	--	--	--	--	--	--	--	--	--	--	--	--	--	--	--	--	--	--	--	--	--	--	--	--	--	--	--	--	--	--	--	--	--	--	--	--	--	--	--	--	--	--	--	--	--	--	--	--	--	--	--	--	--	--	--	--	--	--	--	--	--	--	--	--	--	--	--	--	--	--	--	--	--	--	--	--	--	--	--	--	--	--	--	--	--	--	--	--	--	--	--	--	--	--	--	--	--	--	--	--	--	--	--	--	--	--	--	--	--	--	--	--	--	--	--	--	--	--	--	--	--	--	--	--	--	--	--	--	--	--	--	--	--	--	--	--	--	--	--	--	--	--	--	--	--	--	--	--	--	--	--	--	--	--	--	--	--	--	--	--	--	--	--	--	--	--	--	--	--	--	--	--	--	--	--	--	--	--	--	--	--	--	--	--	--	--	--	--	--	--	--	--	--	--	--	--	--	--	--	--	--	--	--	--	--	--	--	--	--	--	--	--	--	--	--	--	--	--	--	--	--	--	--	--	--	--	--	--	--	--	--	--	--	--	--	--	--	--	--	--	--	--	--	--	--	--	--	--	--	--	--	--	--	--	--	--	--	--	--	--	--	--	--	--	--	--	--	--	--	--	--	--	--	--	--	--	--	--	--	--	--	--	--	--	--	--	--	--	--	--	--	--	--	--	--	--	--	--	--	--	--	--	--	--	--	--	--	--	--	--	--	--	--	--	--	--	--	--	--	--	--	--	--	--	--	--	--	--	--	--	--	--	--	--	--	--	--	--	--	--	--	--	--	--	--	--	--	--	--	--	--	--	--	--	--	--	--	--	--	--	--	--	--	--	--	--	--	--	--	--	--	--	--	--	--	--	--	--	--	--	--	--	--	--	--	--	--	--	--	--	--	--	--	--	--	--	--	--	--	--	--	--	--	--	--	--	--	--	--	--	--	--	--	--	--	--	--	--	--	--	--	--	--	--	--	--	--	--	--	--	--	--	--	--	--	--	--	--	--	--	--	--	--	--	--	--	--	--	--	--	--	--	--	--	--	--	--	--	--	--	--	--	--	--	--	--	--	--	--	--	--	--	--	--	--	--	--	--	--	--	--	--	--	--	--	--	--	--	--	--	--	--	--	--	--	--	--	--	--	--	--	--	--	--	--	--	--	--	--	--	--	--	--	--	--	--	--	--	--	--	--	--	--	--	--	--	--	--	--	--	--	--	--	--	--	--	--	--	--	--	--	--	--	--	--	--	--	--	--	--	--	--	--	--	--	--	--	--	--	--	--	--	--	--	--	--	--	--	--	--	--	--	--	--	--	--	--	--	--	--	--	--	--	--	--	--	--	--	--	--	--	--	--	--	--	--	--	--	--	--	--	--	--	--	--	--	--	--	--	--	--	--	--	--	--	--	--	--	--	--	--	--	--	--	--	--	--	--	--	--	--	--	--	--	--	--	--	--	--	--	--	--	--	--	--	--	--	--	--	--	--	--	--	--	--	--	--	--	--	--	--	--	--	--	--	--	--	--	--	--	--	--	--	--	--	--	--	--	--	--	--	--	--	--	--	--	--	--	--	--	--	--	--	--	--	--	--	--	--	--	--	--	--	--	--	--	--	--	--	--	--	--	--	--	--	--	--	--	--	--	--	--	--	--	--	--	--	--	--	--	--	--	--	--	--	--	--	--	--	--	--	--	--	--	--	--	--	--	--	--	--	--	--	--	--	--	--	--	--	--	--	--	--	--	--	--	--	--	--	--	--	--	--	--	--	--	--	--	--	--	--	--	--	--	--	--	--	--	--	--	--	--	--	--	--	--	--	--	--	--	--	--	--	--	--	--	--	--	--	--	--	--	--	--	--	--	--	--	--	--	--	--	--	--	--	--	--	--	--	--	--	--	--	--	--	--	--	--	--	--	--	--	--	--	--	--	--	--	--	--	--	--	--	--	--	--	--	--	--	--	--	--	--	--	--	--	--	--	--	--	--	--	--	--	--	--	--	--	--	--	--	--	--	--	--	--	--	--	--	--	--	--	--	--	--	--	--	--	--	--	--	--	--	--	--	--	--	--	--	--	--	--	--	--	--	--	--	--	--	--	--	--	--	--	--	--	--	--	--	--	--	--	--	--	--	--	--	--	--	--	--	--	--	--	--	--	--	--	--	--	--	--	--	--	--	--	--	--	--	--	--	--	--	--	--	--	--	--	--	--	--	--	--	--	--	--	--	--	--	--	--	--	--	--	--	--	--	--	--	--	--	--	--	--	--	--	--	--	--	--	--	--	--	--	--	--	--	--	--	--	--	--	--	--	--	--	--	--	--	--	--	--	--	--	--	--	--	--	--	--	--	--	--	--	--	--	--	--	--	--	--	--	--	--	--	--	--	--	--	--	--	--	--	--	--	--	--	--	--	--	--	--	--	--	--	--	--	--	--	--	--	--	--	--	--	--	--	--	--	--	--	--	--	--	--	--	--	--	--	--	--	--	--	--	--	--	--	--	--	--	--	--	--	--	--	--	--	--	--	--	--	--	--	--	--	--	--	--	--	--	--	--	--	--	--	--	--	--	--	--	--	--	--	--	--	--	--	--	--	--	--	--	--	--	--	--	--	--	--	--	--	--	--	--	--	--	--	--	--	--	--	--	--	--	--	--	--	--

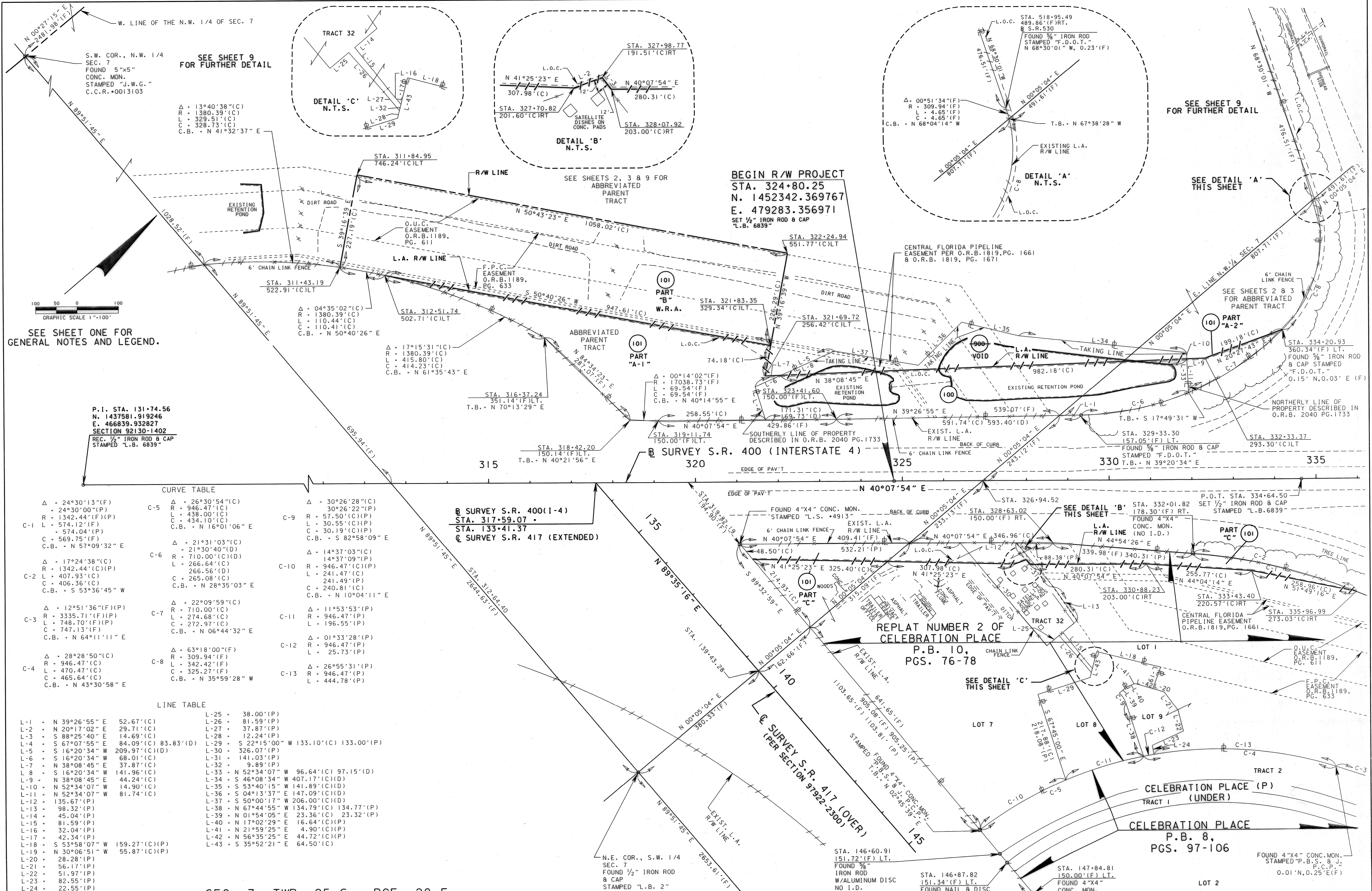
STATE ROAD 400 (I-4) INTERCHANGE AT STATE ROAD 530 (US 192)



KEYMAP
THIS MAP IS NOT A SURVEY

RIGHT OF WAY MAP	FLORIDA DEPARTMENT OF TRANSPORTATION RIGHT OF WAY MAPPING	APPROVED BY	DATE							BY	DATE	F.A.P. NO.	N/A	SECTION 92130	MAPS PREPARED BY URS CORPORATION	FIELD BOOK NO.'S SEE GENERAL NOTES ON SHEET ONE	
		<i>Deborah Mott</i>	4-26-02							PRELIM	P.McCRAY	02/01					
		FOR DISTRICT SECRETARY								FINAL	D.KING	04/02				W.P.I. No. 5147335	SCALE: 1" = 400'
				REVISED PAR. 102 PARENT TRACT	S.MILLER	12/03/03							STATE ROAD NO. 400	OSCEOLA COUNTY	F.P. NO. 242531 I	SHEET 3 OF 13	
				REVISION	BY	DATE	REVISION	BY	DATE	CHECKED	R.MARKS	04/02					
													STATE ROAD 400 (I-4) INTERCHANGE AT STATE ROAD 530 (US 192)				

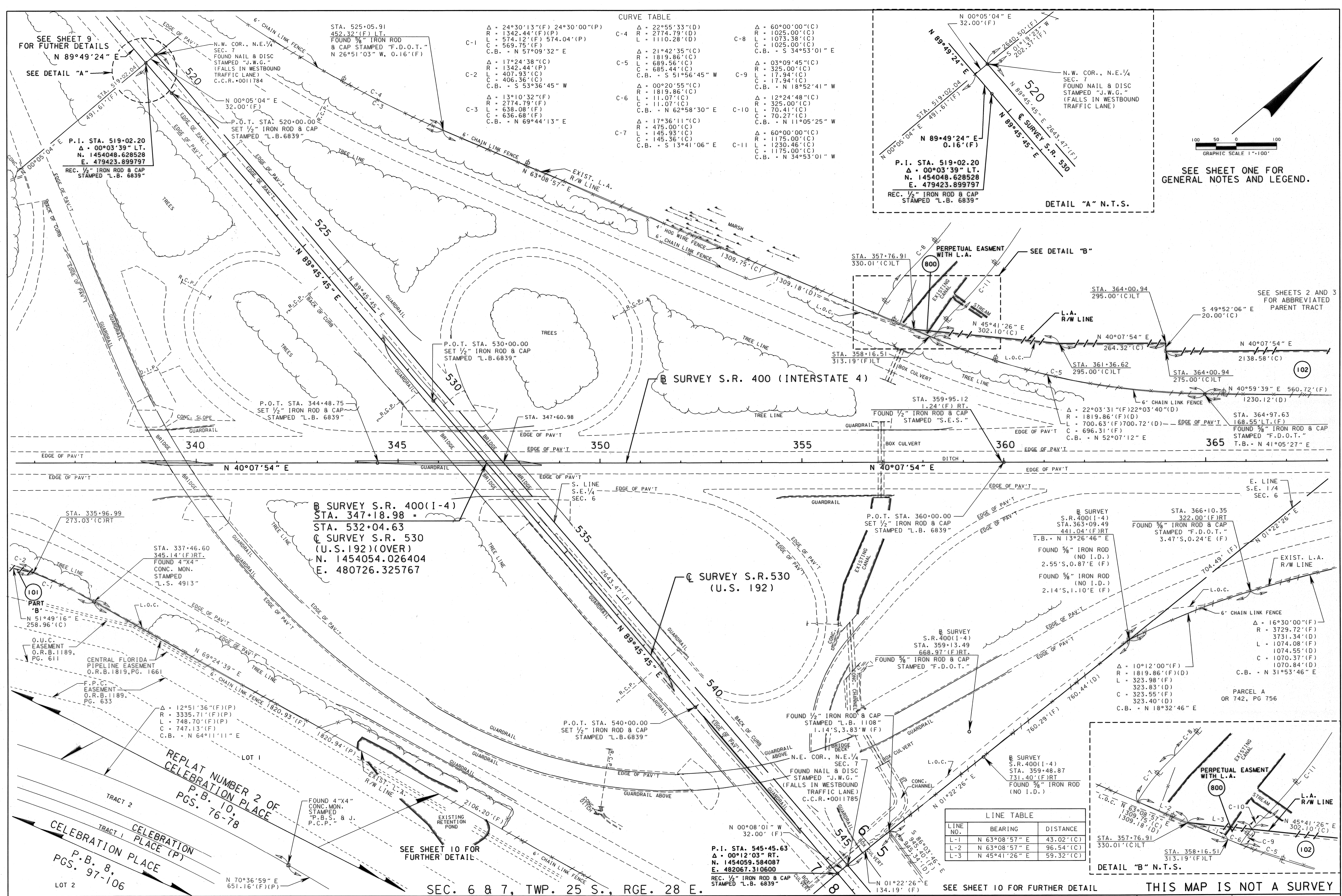
STATE ROAD 400 (I-4) INTERCHANGE AT STATE ROAD 530 (US 192)

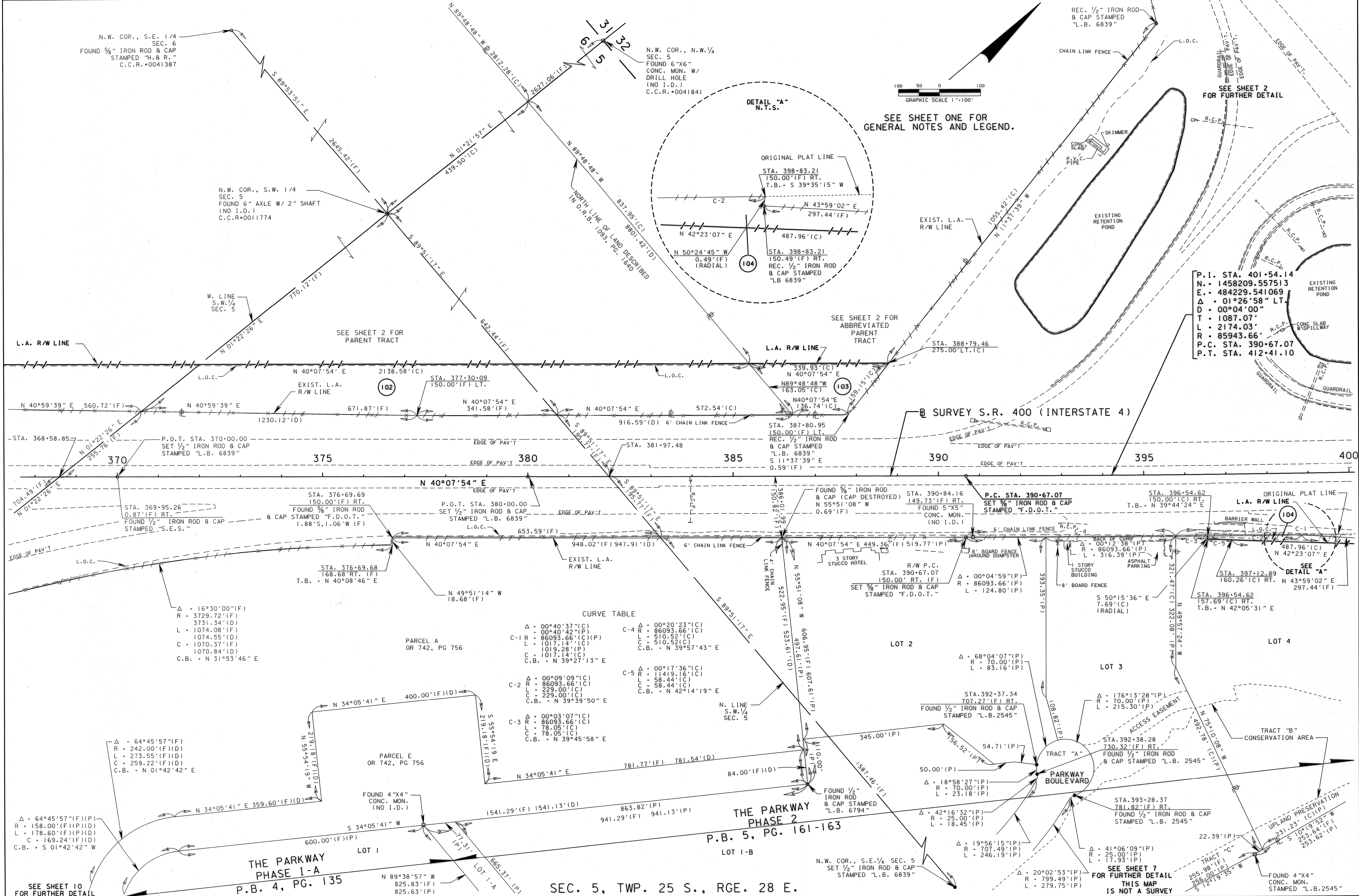


SEC. 7, TWP. 25 S., RGE. 28 E.

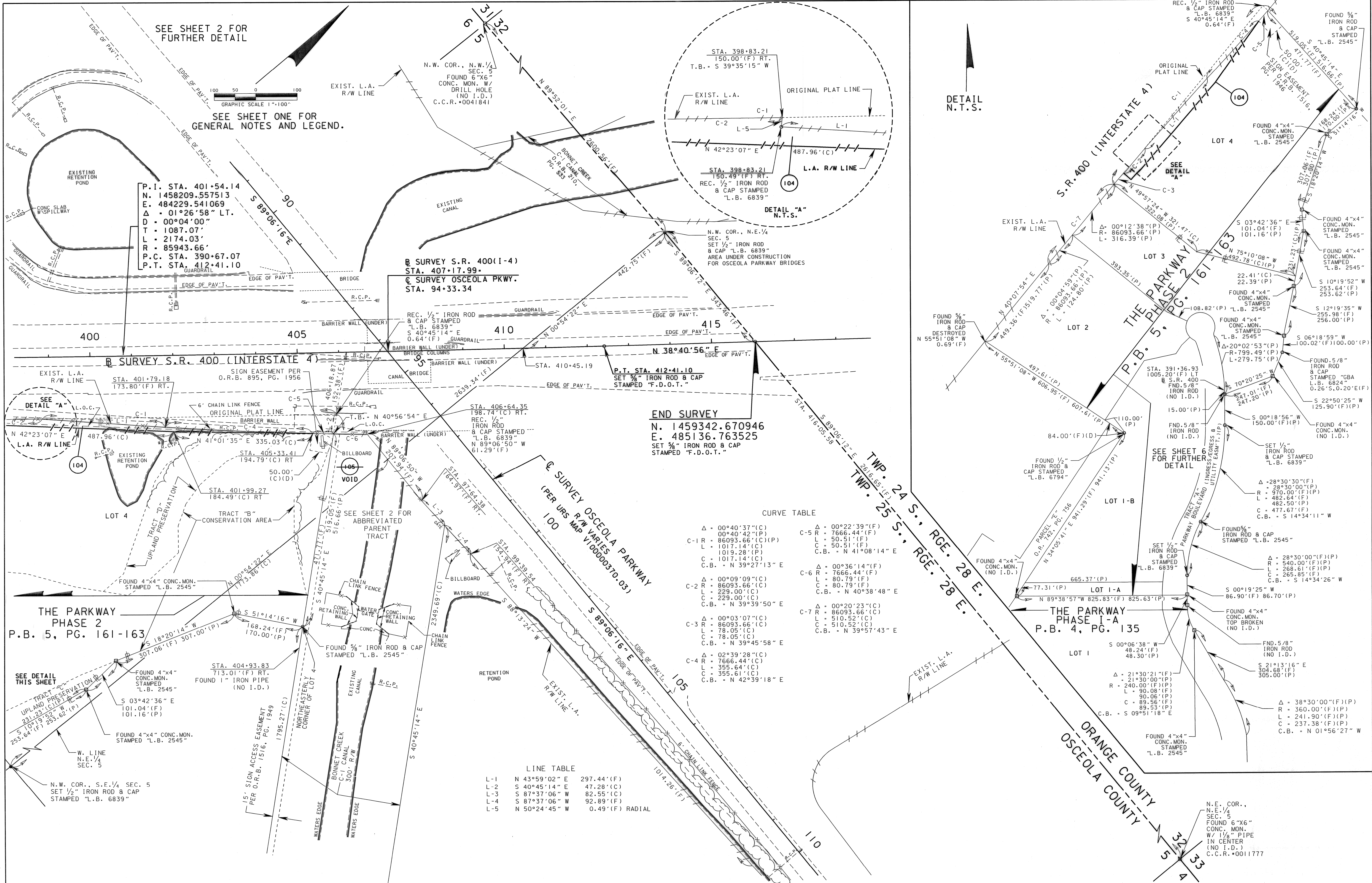
THIS MAP IS NOT A SURVEY

RIGHT OF WAY MAP	FLORIDA DEPARTMENT OF TRANSPORTATION RIGHT OF WAY MAPPING	APPROVED BY <i>Deborah Nott</i> FOR DISTRICT SECRETARY	DATE 4-26-02	ADD TAKING LINE LABELS TO P. 100 - WHOLE TAKE VOID P. 900	S. WALKER 02/20/04	BY DATE P. McGRAY 02/01	F.A.P. NO. N/A	SECTION 92130	MAPS PREPARED BY URS CORPORATION	FIELD BOOK NO. 'S SEE GENERAL NOTES ON SHEET ONE
STATE ROAD NO. 400	OSCEOLA COUNTY	F.P.I. NO. 5147335	F.P. NO. 242531 I	ADD EXIST. ESM. REV. P. 101 PART A TO PARTS A-1 & A-2 & A-3 ADDED P. 100	S. MILLER 05/07/03	PRELIM D. KING 04/02	CHECKED R. MARKS 04/02	W.P.L. NO. 5147335	SCALE: 1" = 100'	SHEET 4 OF 13





RIGHT OF WAY MAP		FLORIDA DEPARTMENT OF TRANSPORTATION RIGHT OF WAY MAPPING		APPROVED BY <i>Deborah Nott</i> FOR DISTRICT SECRETARY		DATE 4-26-02		REV. PARENT TRACT FOR PAR 102		S. MILLER		12/03/03		PRELIM		P. MCCRAY		02/01		F.A.P. NO. N/A		SECTION 92130		MAPS PREPARED BY URS CORPORATION		FIELD BOOK NO. 5		SEE GENERAL NOTES ON SHEET ONE	
								REV. PAR 104, DELETE SIGN EASEMENTS		S. MILLER		7/15/03		FINAL		D. KING		04/02		STATE ROAD NO. 400		OSCEOLA COUNTY		W.P.I. NO. 5147335		SCALE: 1" = 100'			
														CHECKED		R. MARKS		04/02						F.P. NO. 242531 I		SHEET 6 OF 13			



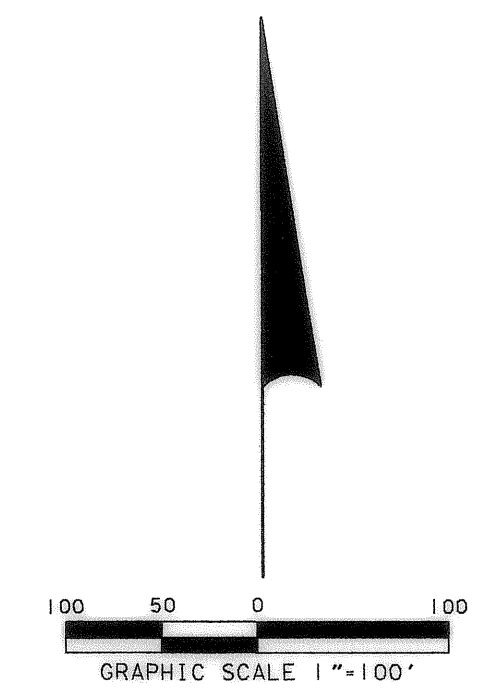
SEC. 5, TWP. 25 S., RGE. 28 E.

THIS MAP IS NOT A SURVEY

RIGHT OF WAY MAP	FLORIDA DEPARTMENT OF TRANSPORTATION RIGHT OF WAY MAPPING	APPROVED BY <i>Deborah Mott</i> FOR DISTRICT SECRETARY	DATE 4-26-02	REVISION	BY	DATE	PRELIM P. MCGRAY 02/01	F.A.P. NO. N/A	SECTION 92130	MAPS PREPARED BY URS CORPORATION W.P.I. No. 5147335	FIELD BOOK NO.'S SEE GENERAL NOTES ON SHEET ONE SCALE: 1"=100'
RIGHT OF WAY MAP	FLORIDA DEPARTMENT OF TRANSPORTATION RIGHT OF WAY MAPPING	APPROVED BY <i>Deborah Mott</i> FOR DISTRICT SECRETARY	DATE 4-26-02	REVISION	BY	DATE	FINAL D. KING 04/02	STATE ROAD NO. 400	OSCEOLA COUNTY	F.P. NO. 242531 I	SHEET 7 OF 13

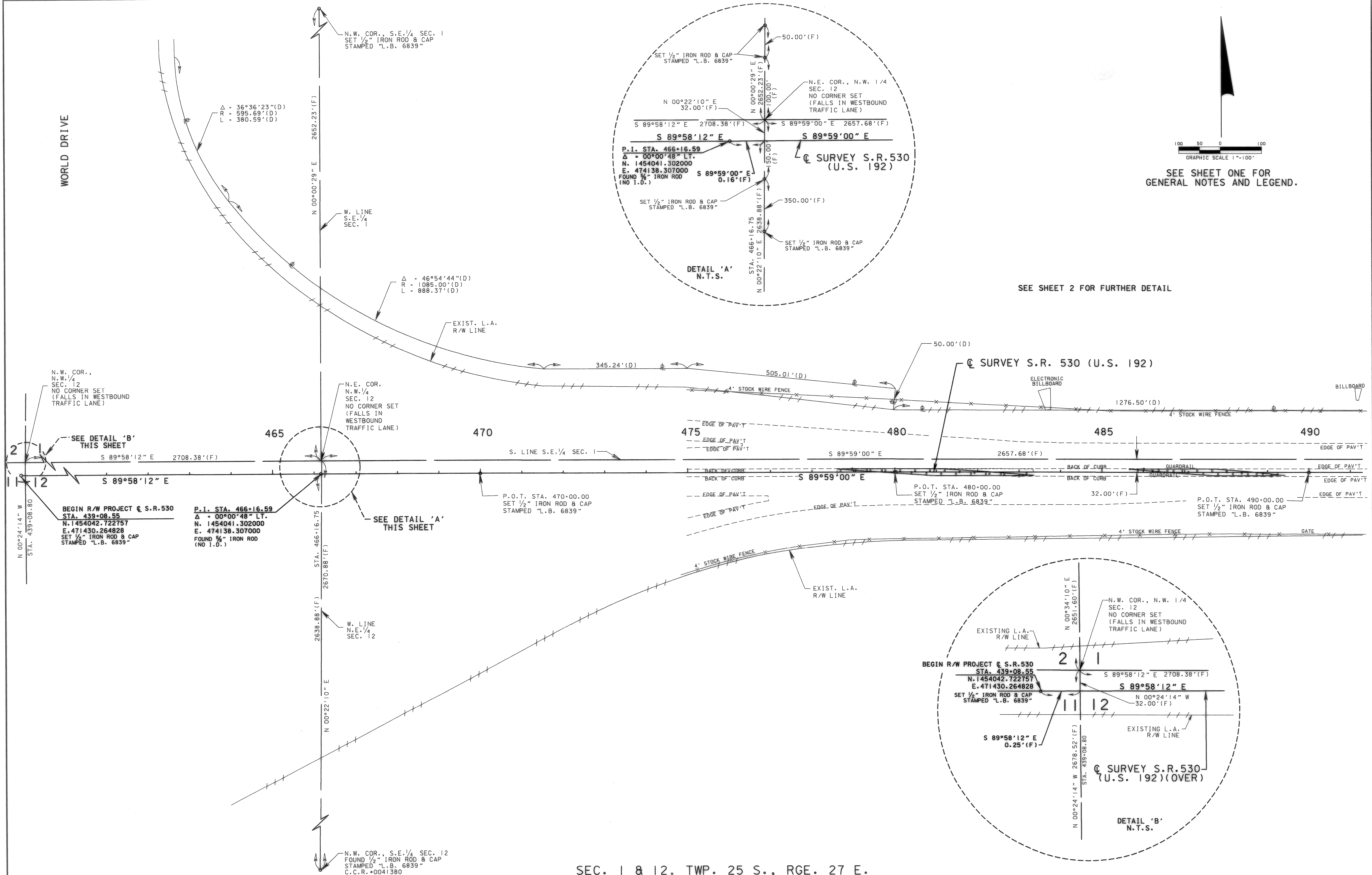
STATE ROAD 400 (I-4) INTERCHANGE AT STATE ROAD 530 (US 192)

WORLD DRIVE



SEE SHEET ONE FOR
GENERAL NOTES AND LEGEND.

SEE SHEET 2 FOR FURTHER DETAIL



SEC. 1 & 12, TWP. 25 S., RGE. 27 E.

THIS MAP IS NOT A SURVEY

RIGHT OF WAY MAP

FLORIDA DEPARTMENT OF TRANSPORTATION
RIGHT OF WAY MAPPING

APPROVED BY
Deborah Mott
FOR DISTRICT SECRETARY

DATE
4-26-02

REVISION

BY

DATE

REVISION

BY

DATE

PRELIM
FINAL

BY
P. McCray
D. King

DATE
02/01
04/02

F.A.P. NO. N/A
STATE ROAD NO. 400

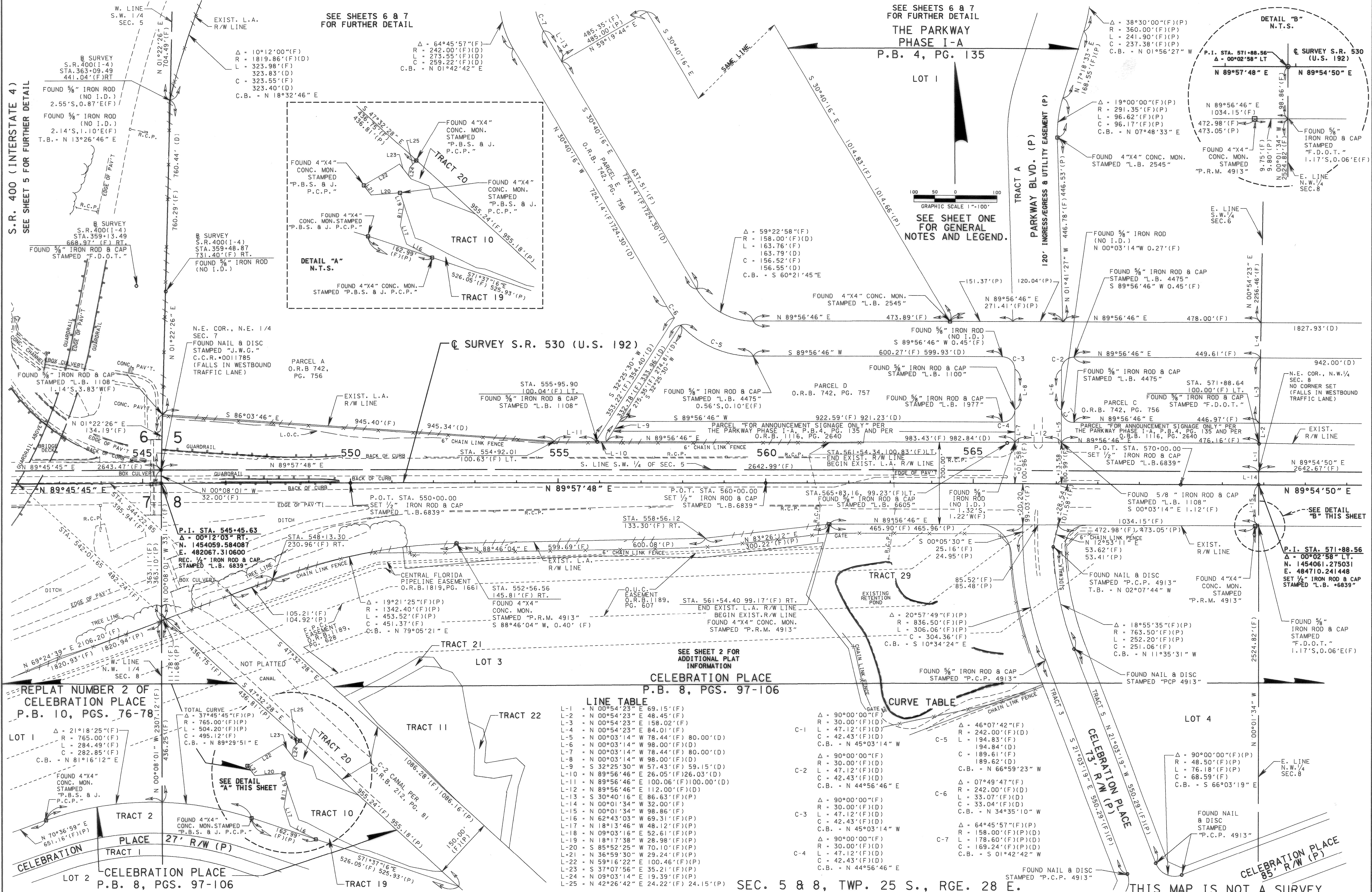
SECTION 92130
OSCEOLA COUNTY

MAPS PREPARED BY
URS CORPORATION
W.P.I. No. 5147335

FIELD BOOK NO.'S
SEE GENERAL NOTES ON SHEET ONE
SCALE: 1"=100'
SHEET 8 OF 13

STATE ROAD 400 (I-4) INTERCHANGE AT STATE ROAD 530 (US 192)

S.R. 400 (INTERSTATE 4)
SEE SHEET 5 FOR FURTHER DETAIL



RIGHT OF WAY MAP

FLORIDA DEPARTMENT OF TRANSPORTATION
RIGHT OF WAY MAPPING

APPROVED BY
Deborah Mott 4-26-02
FOR DISTRICT SECRETARY

REVISION	BY	DATE	REVISION	BY	DATE
PRELIM	P. MCGRAY	02/01			
FINAL	D. KING	04/02			
CHECKED	R. MARKS	04/02			

F.A.P. NO. N/A

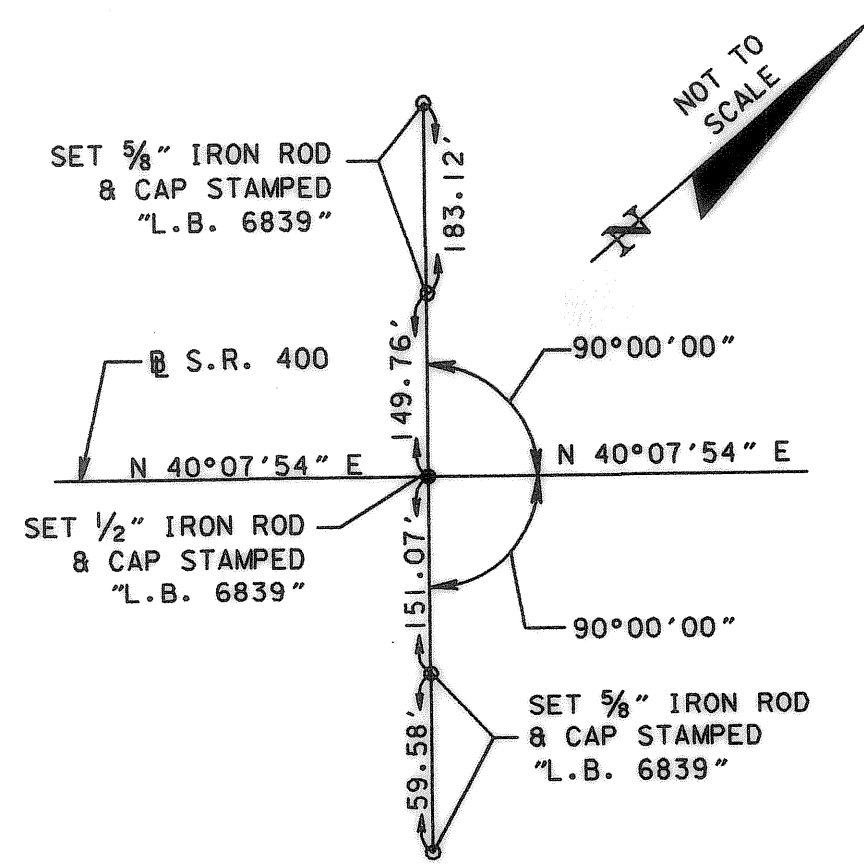
STATE ROAD NO. 400

SECTION 92130

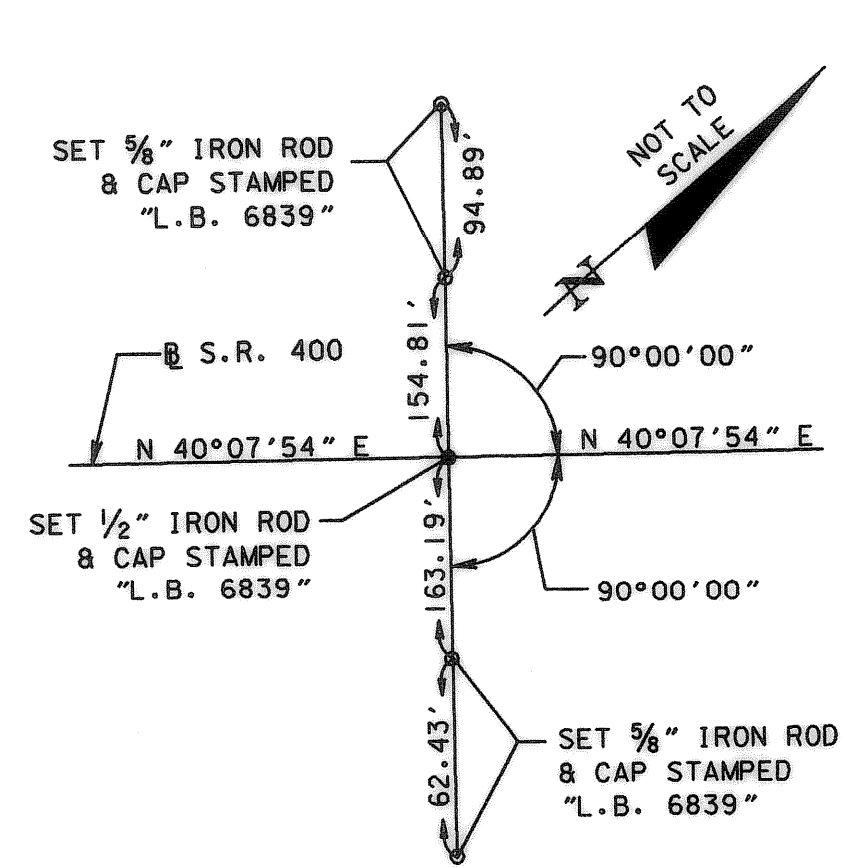
OSCEOLA COUNTY

MAPS PREPARED BY URS CORPORATION	FIELD BOOK NO. 'S SEE GENERAL NOTES ON SHEET ONE
W.P.I. No. 5147335	SCALE: 1"=100'
F.P. NO. 242531 I	SHEET 10 OF 13

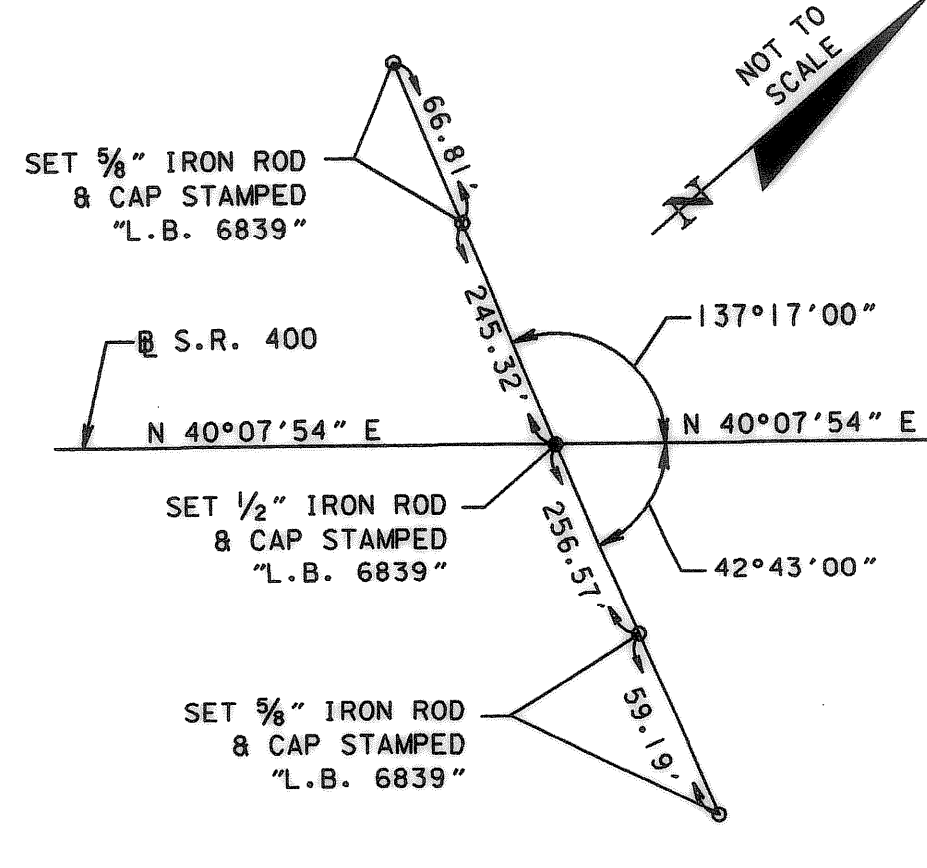
STATE ROAD 400 (I-4) INTERCHANGE AT STATE ROAD 530 (US 192)



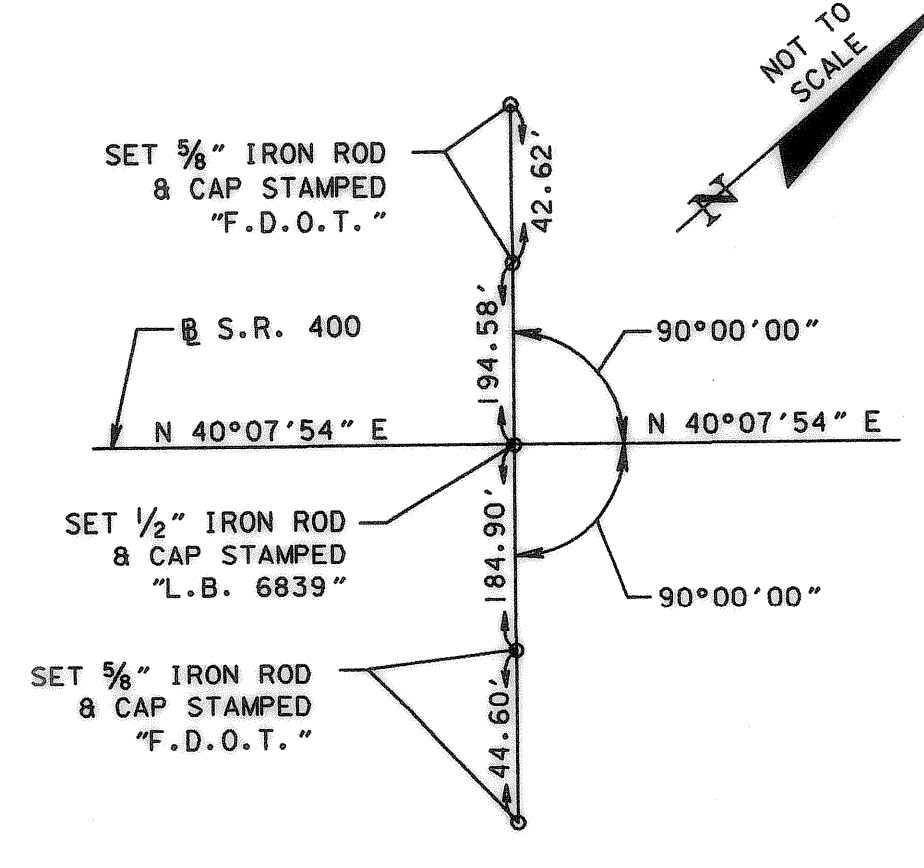
BEGIN SURVEY
STA. 324+80.25
S.R. 400



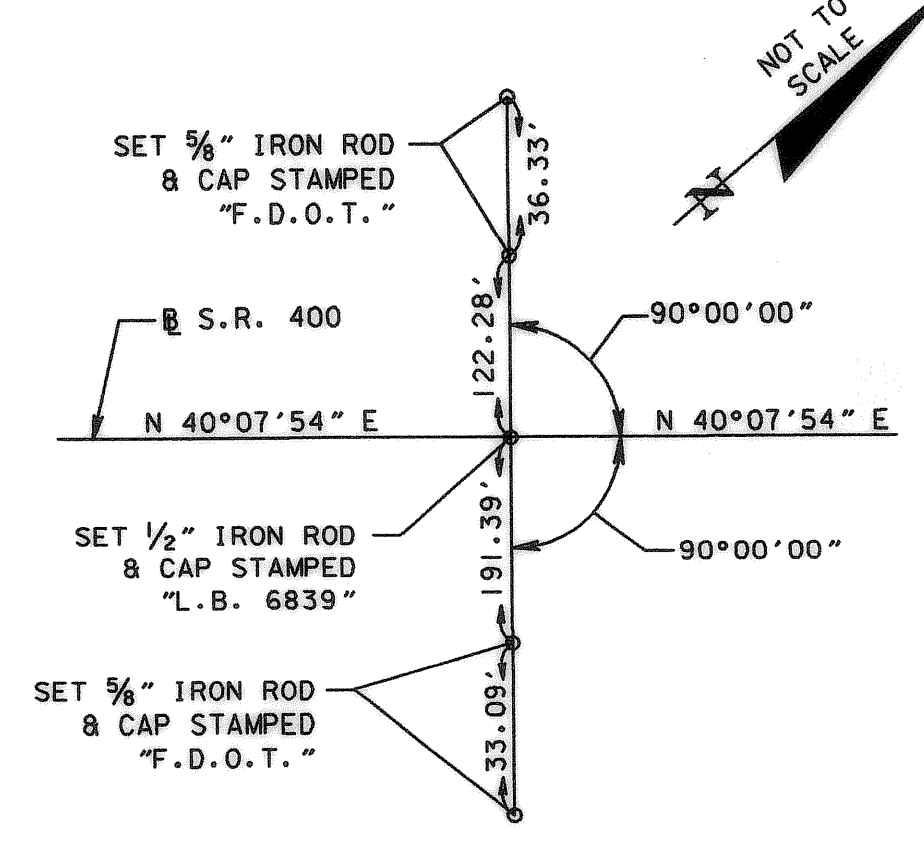
P.O.T. STA. 334+64.50
S.R. 400



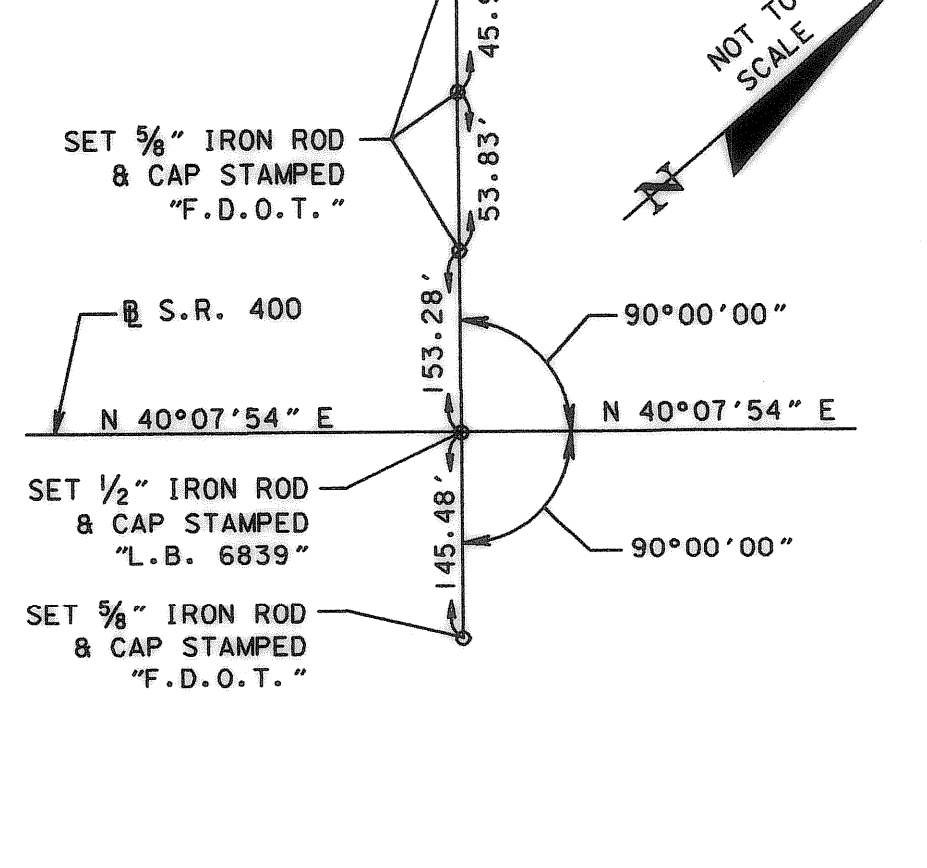
P.O.T. STA. 344+48.75
S.R. 400



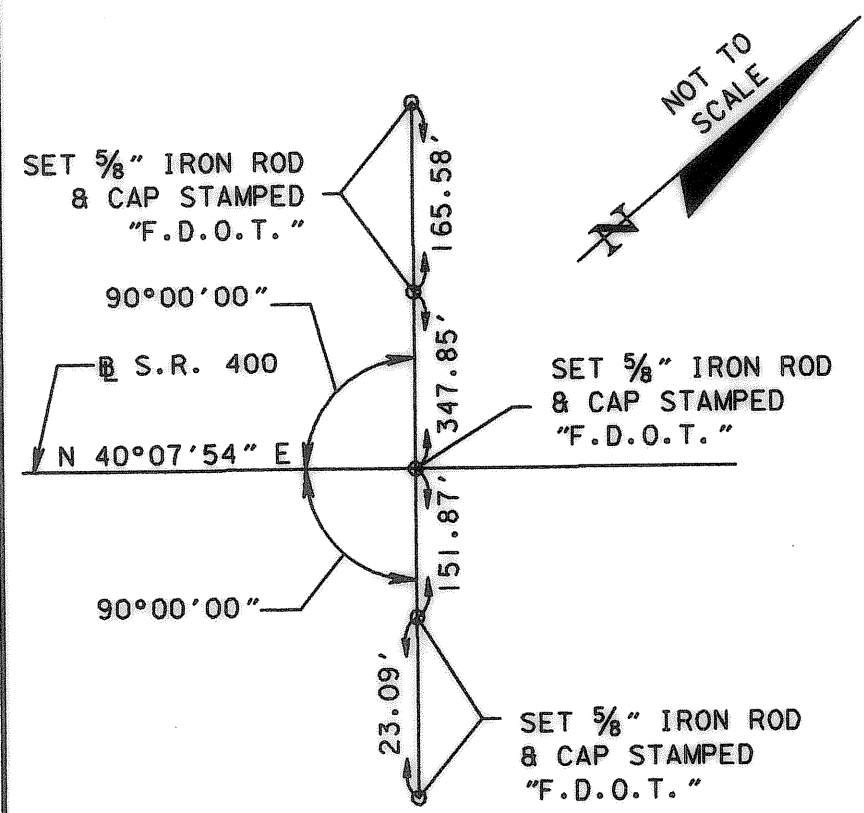
P.O.T. STA. 360+00.00
S.R. 400



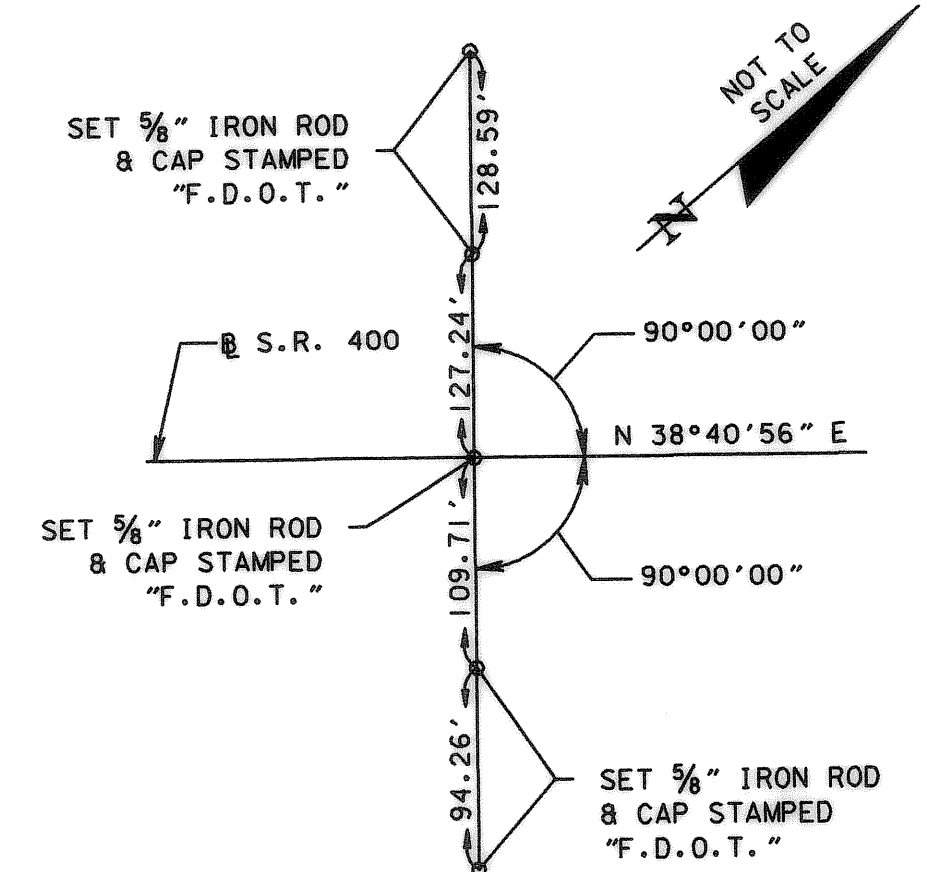
P.O.T. STA. 370+00.00
S.R. 400



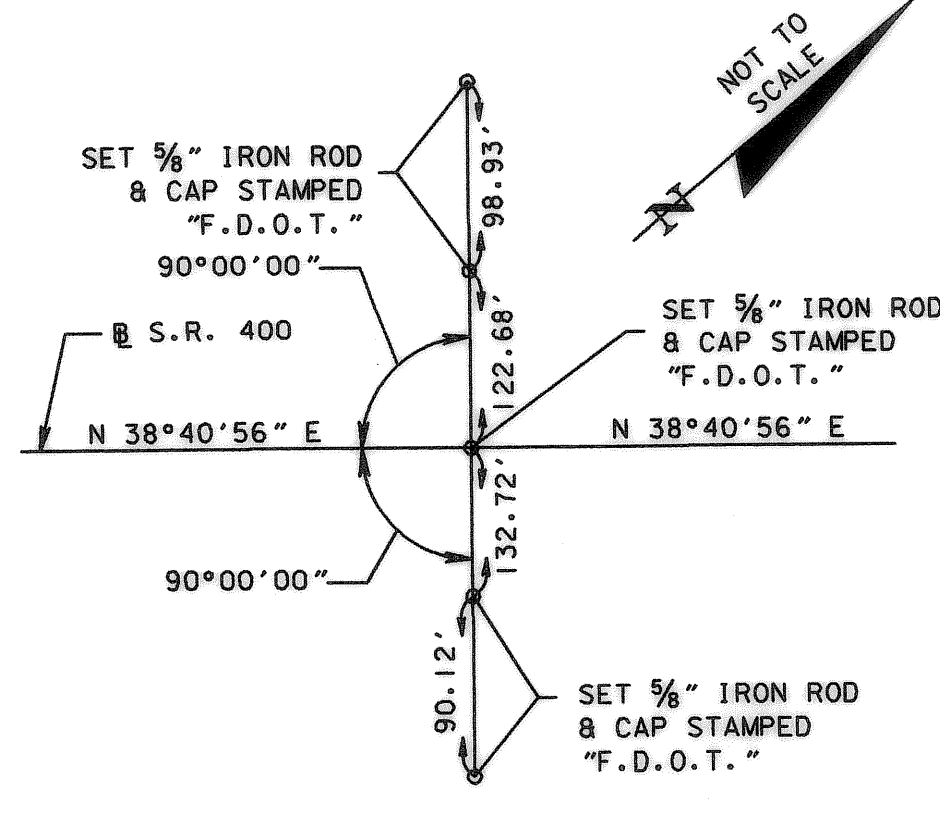
P.O.T. STA. 380+00.00
S.R. 400



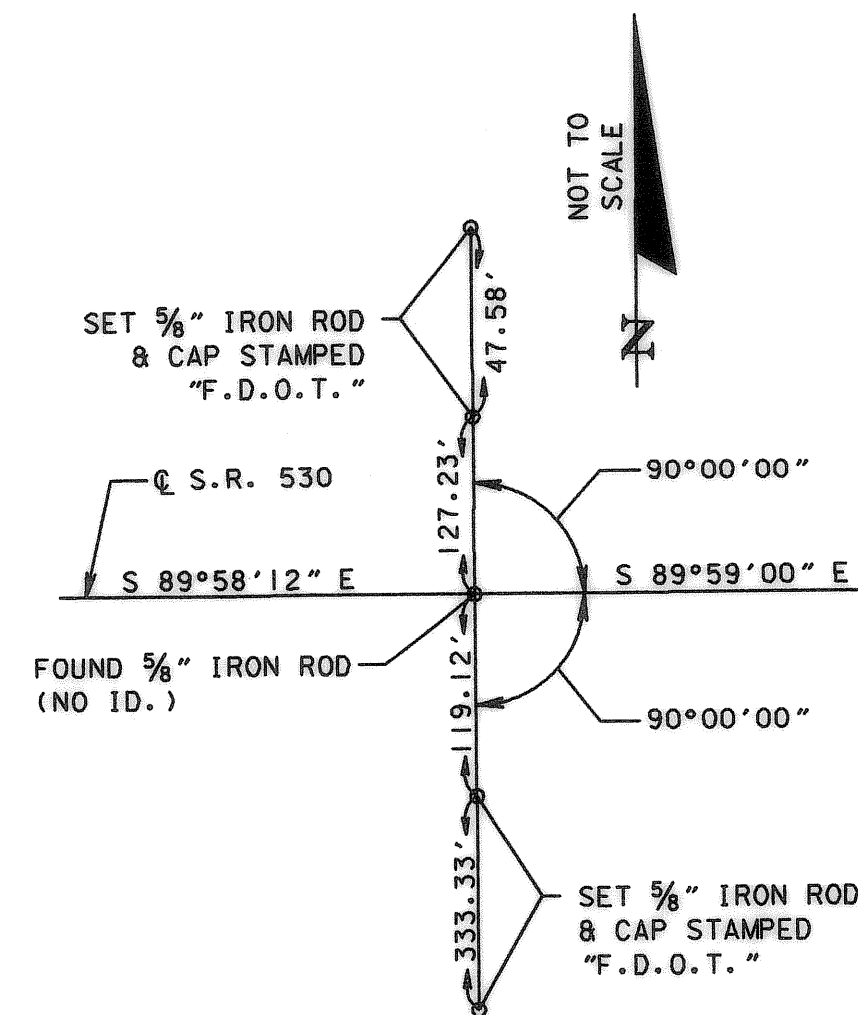
P.C. STA. 390+67.07
S.R. 400



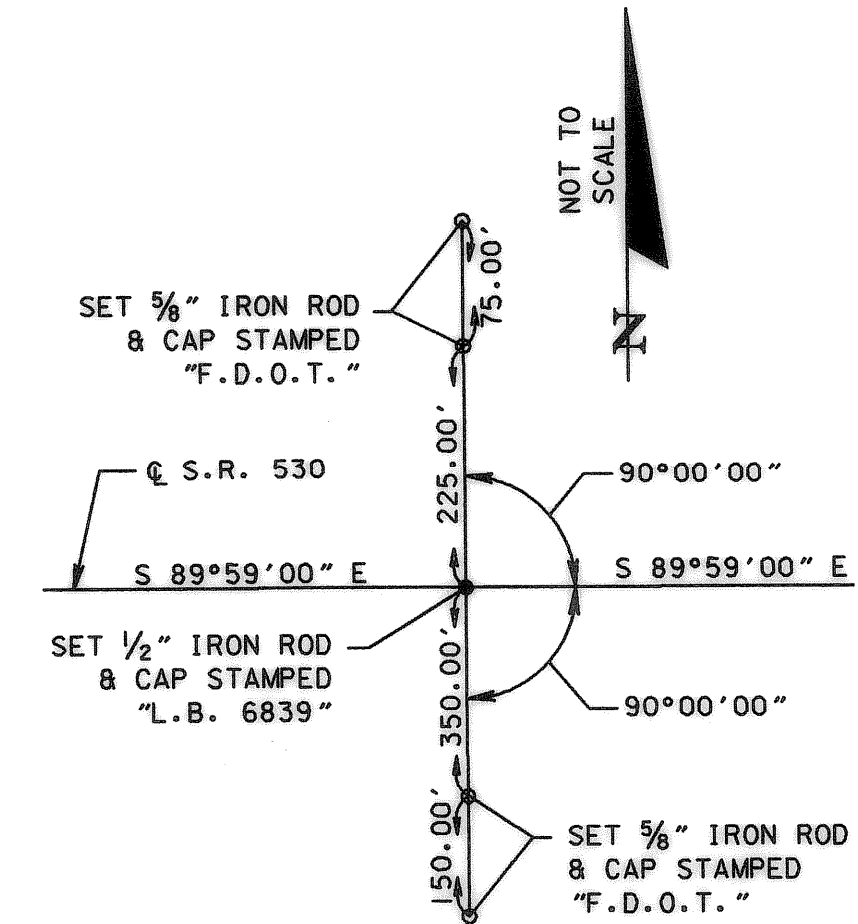
P.T. STA. 412+41.10
S.R. 400



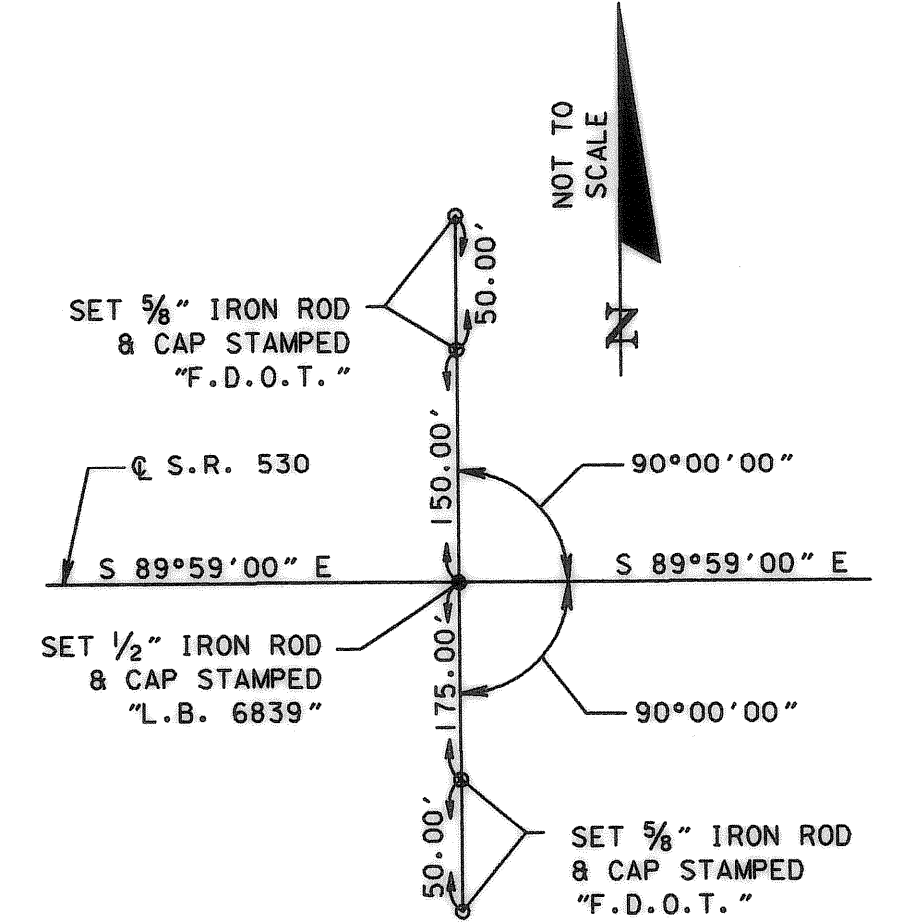
END SURVEY
STA. 416+05.58
S.R. 400



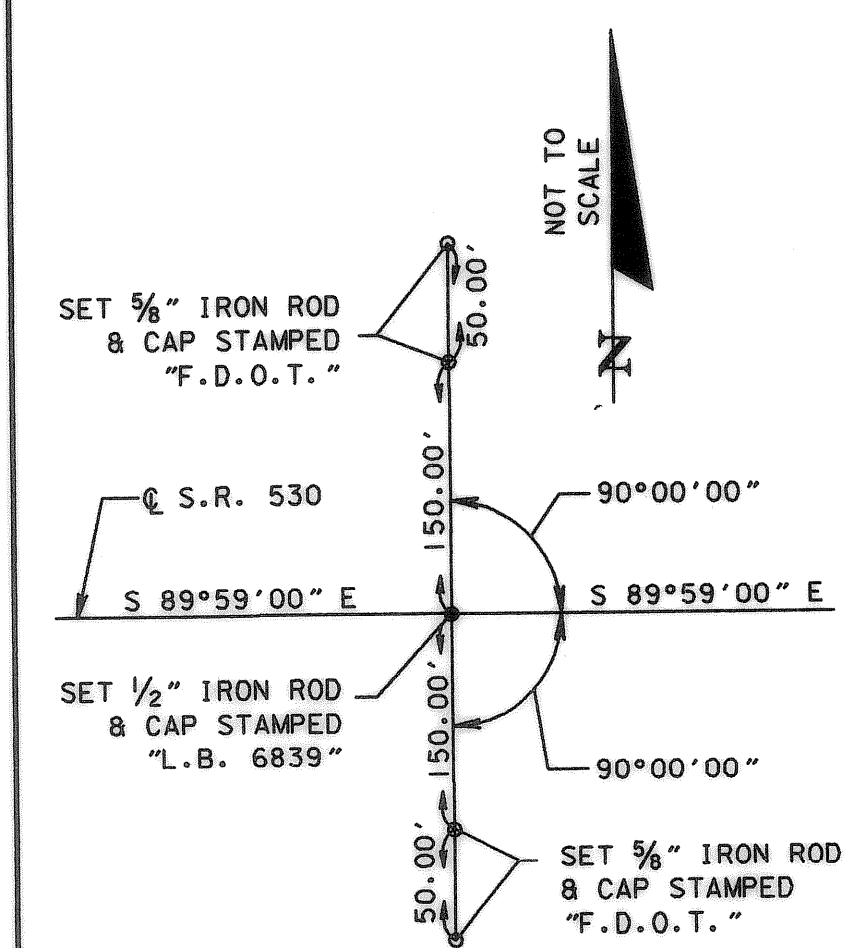
P.I. STA. 466+16.59
S.R. 530
 $\Delta = 00^{\circ}00'48''$ LT.



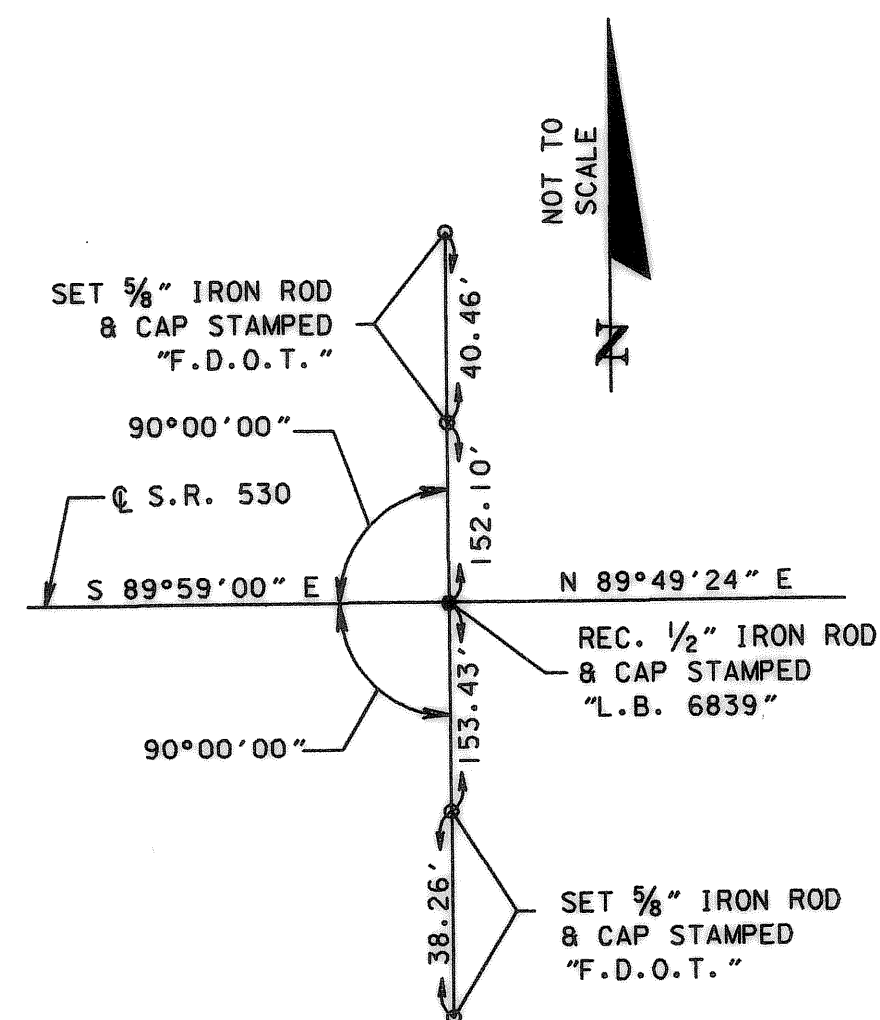
P.O.T. STA. 470+00.00
S.R. 530



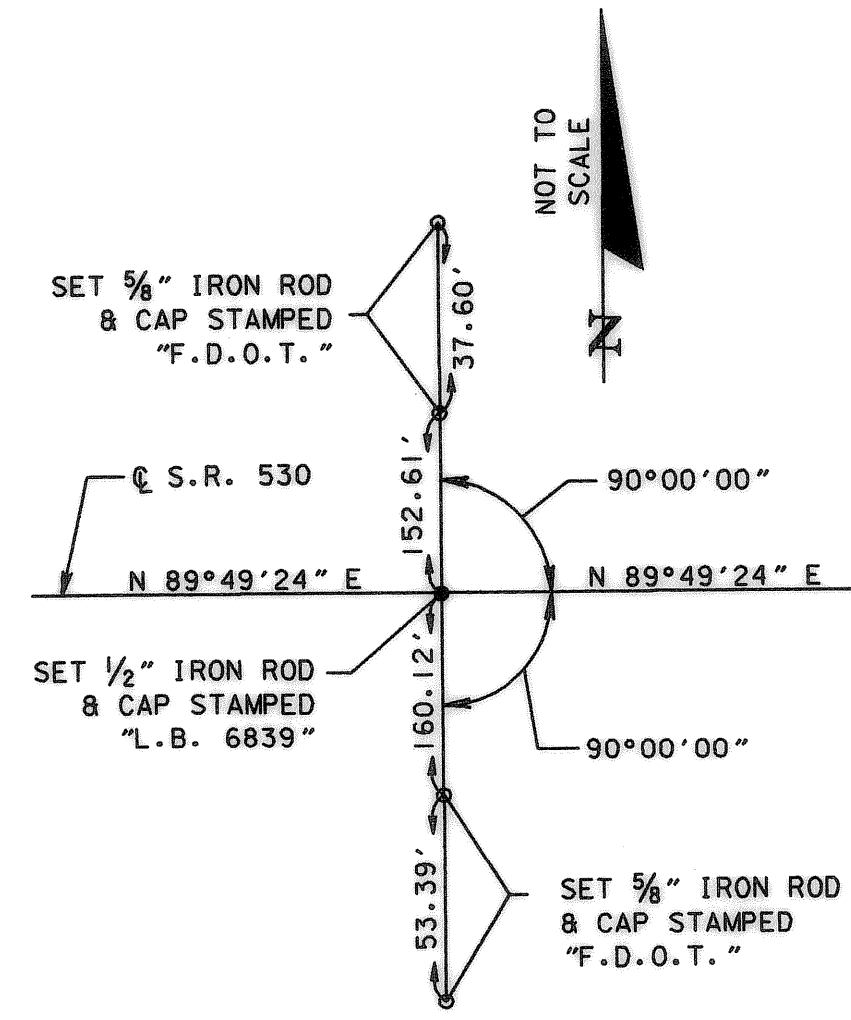
P.O.T. STA. 480+00.00
S.R. 530



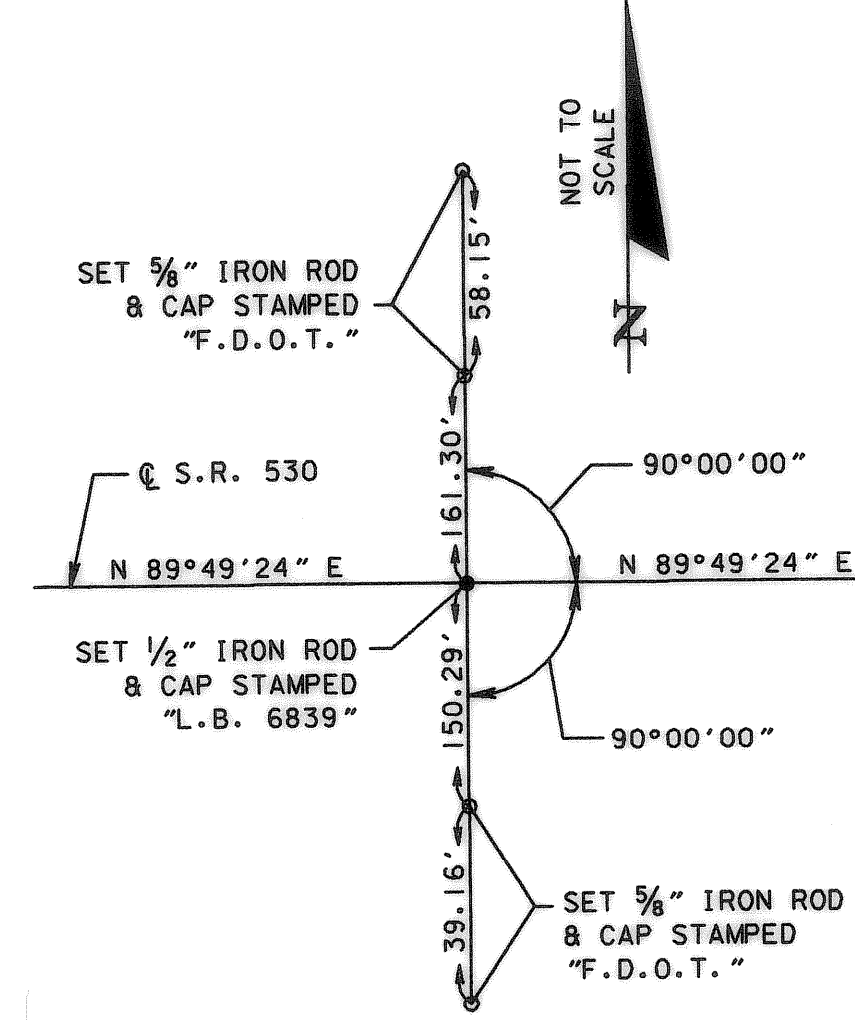
P.O.T. STA. 490+00.00
S.R. 530



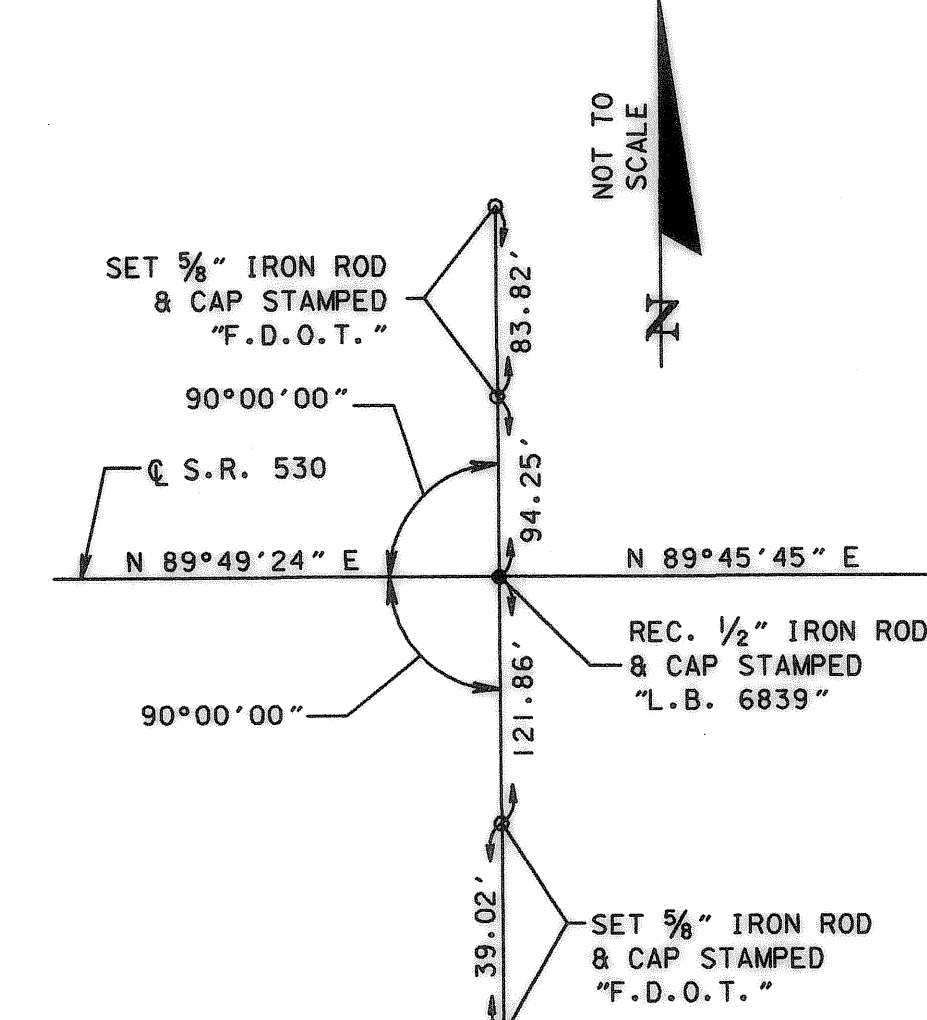
P.I. STA. 492+74.68
S.R. 530
 $\Delta = 00^{\circ}11'36''$ LT.



P.O.T. STA. 500+00.00
S.R. 530



P.O.T. STA. 510+00.00
S.R. 530



P.I. STA. 519+02.20
S.R. 530
 $\Delta = 00^{\circ}03'39''$ LT.

THIS MAP IS NOT A SURVEY

RIGHT OF WAY MAP

FLORIDA DEPARTMENT OF TRANSPORTATION
RIGHT OF WAY MAPPING

APPROVED BY
Deborah Mott
DATE 4-28-02
FOR DISTRICT SECRETARY

REVISION	BY	DATE	REVISION	BY	DATE

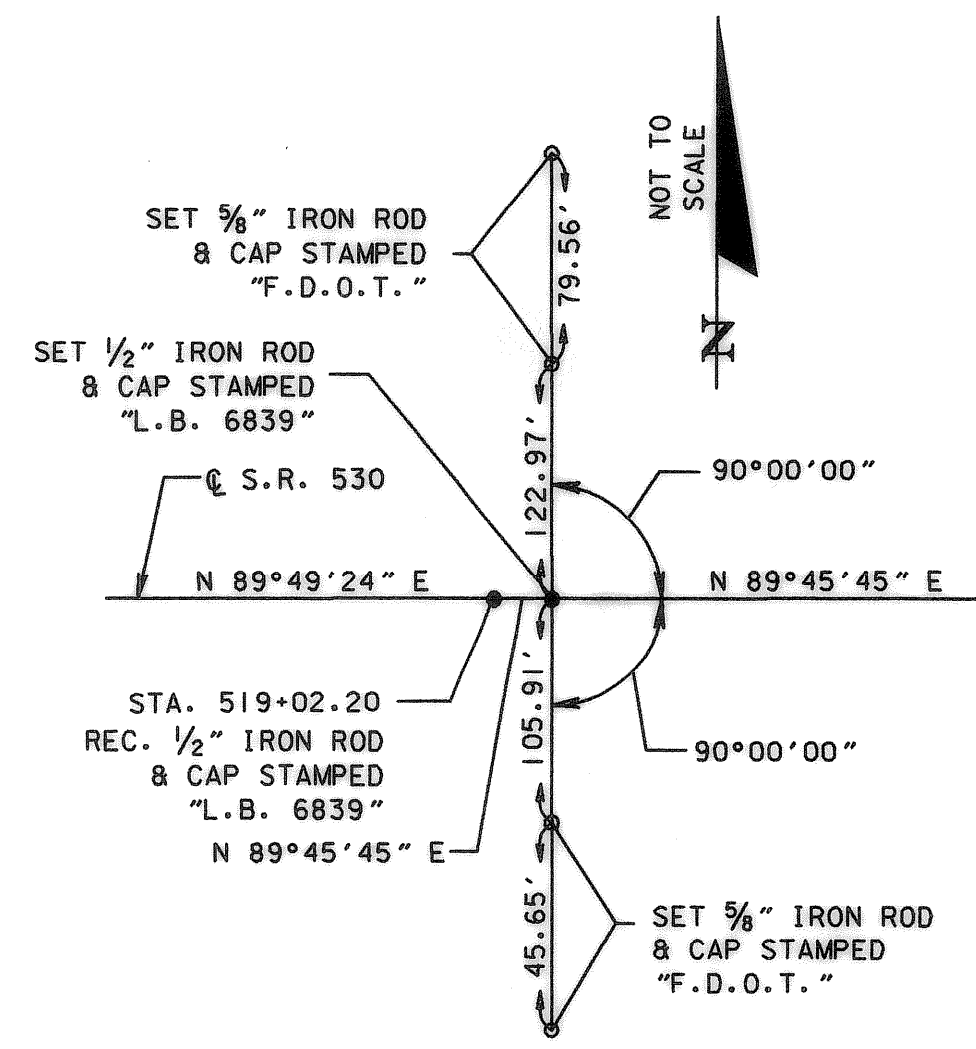
	BY	DATE
PRELIM	P. McCRAY	02/01
FINAL	D. KING	04/02
CHECKED	R. MARKS	04/02

F.A.P. NO. N/A
STATE ROAD NO. 400

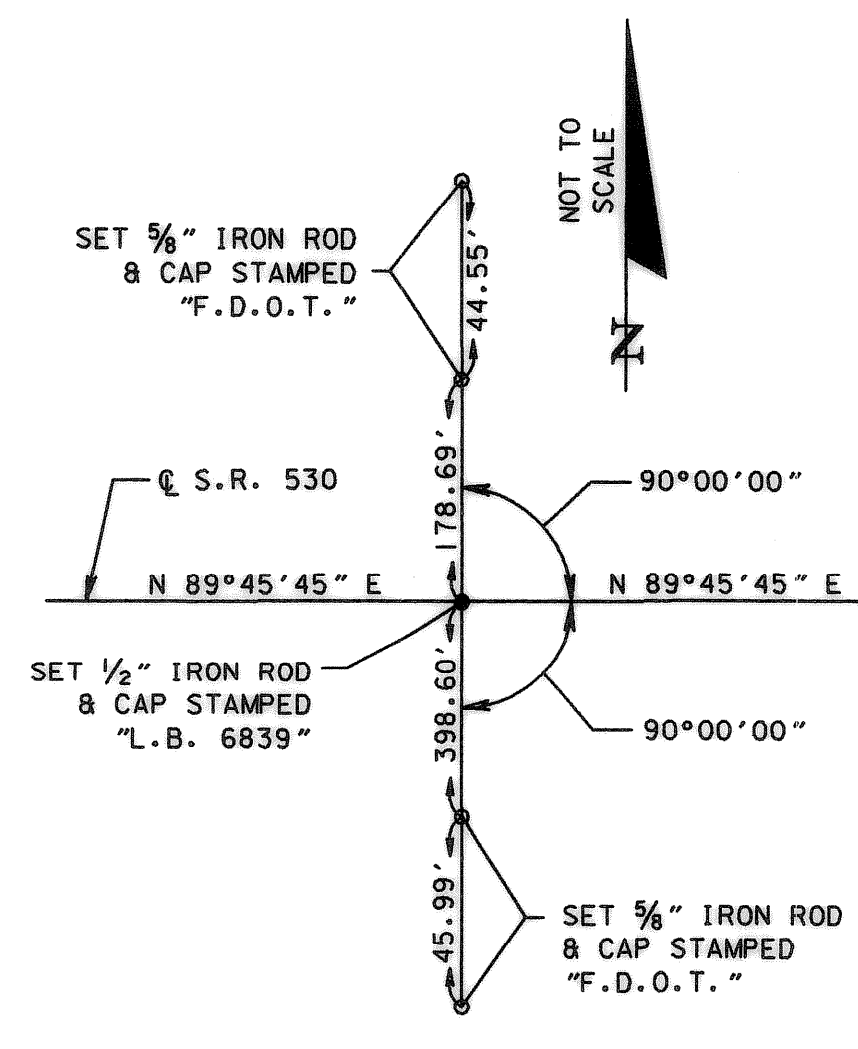
SECTION 92130
OSCEOLA COUNTY

MAPS PREPARED BY URS CORPORATION	FIELD BOOK NO.'S SEE GENERAL NOTES ON SHEET ONE
W.P.I. NO. 5147335	SCALE: N/A
F.P. NO. 242531	SHEET 11 OF 13

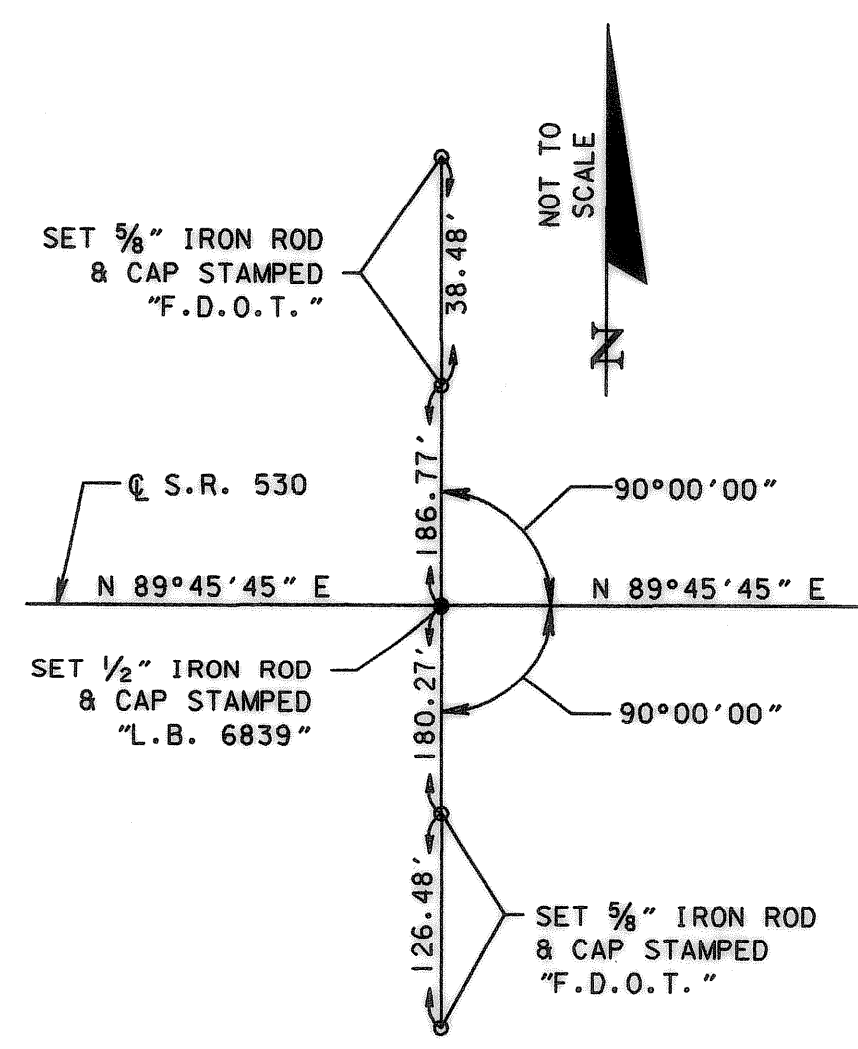
STATE ROAD 400 (I-4) INTERCHANGE AT STATE ROAD 530 (US 192)



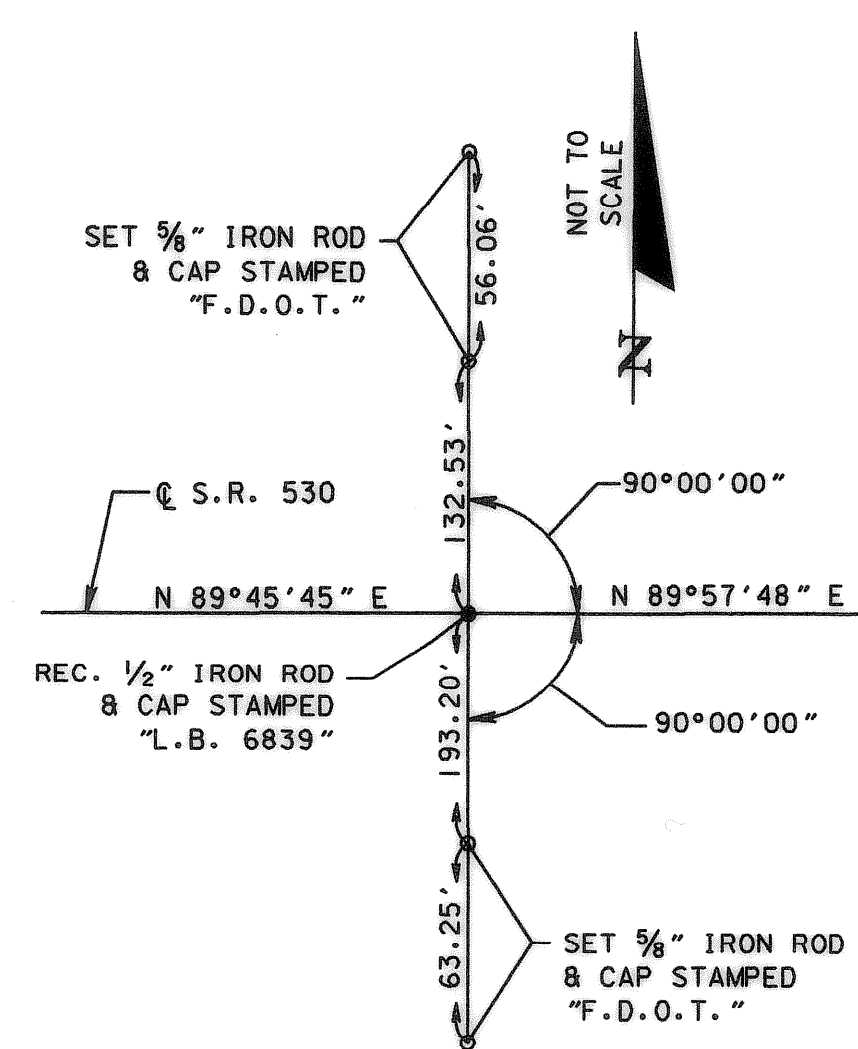
P.O.T. STA. 520+00.00
S.R. 530



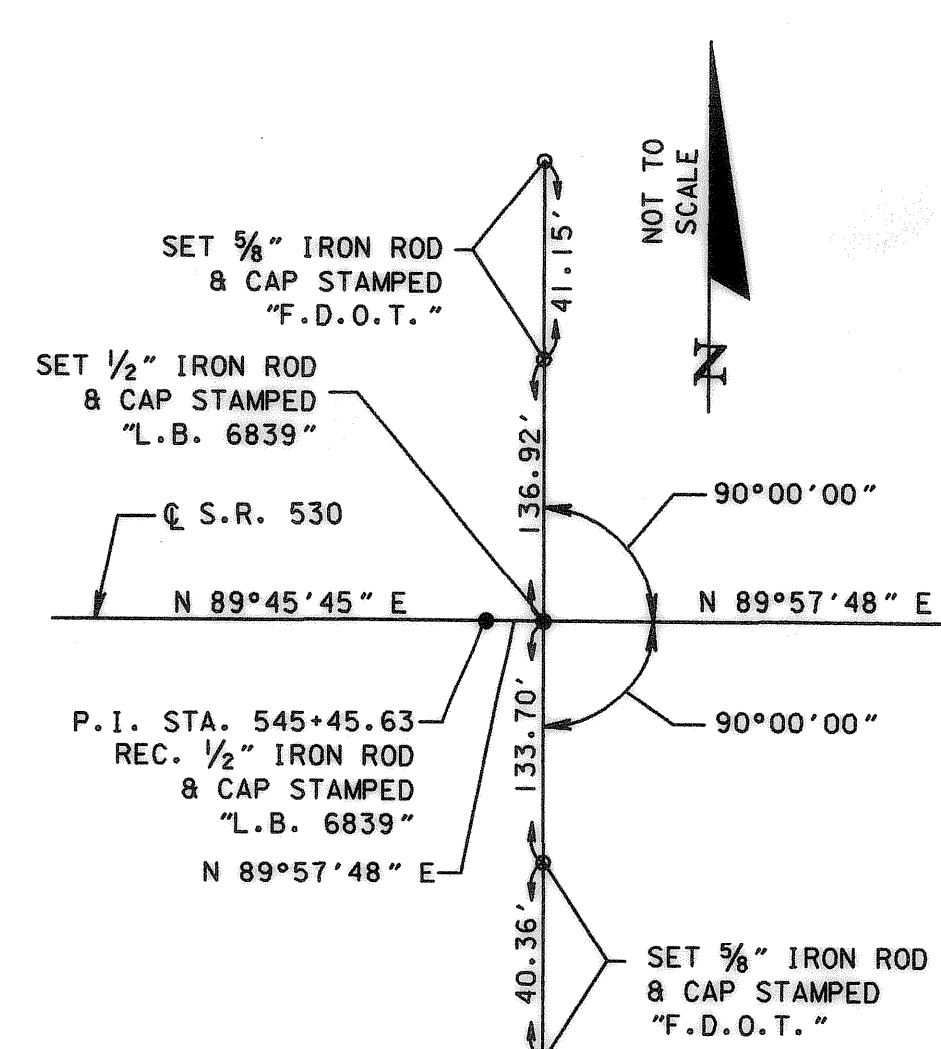
P.O.T. STA. 530+00.00
S.R. 530



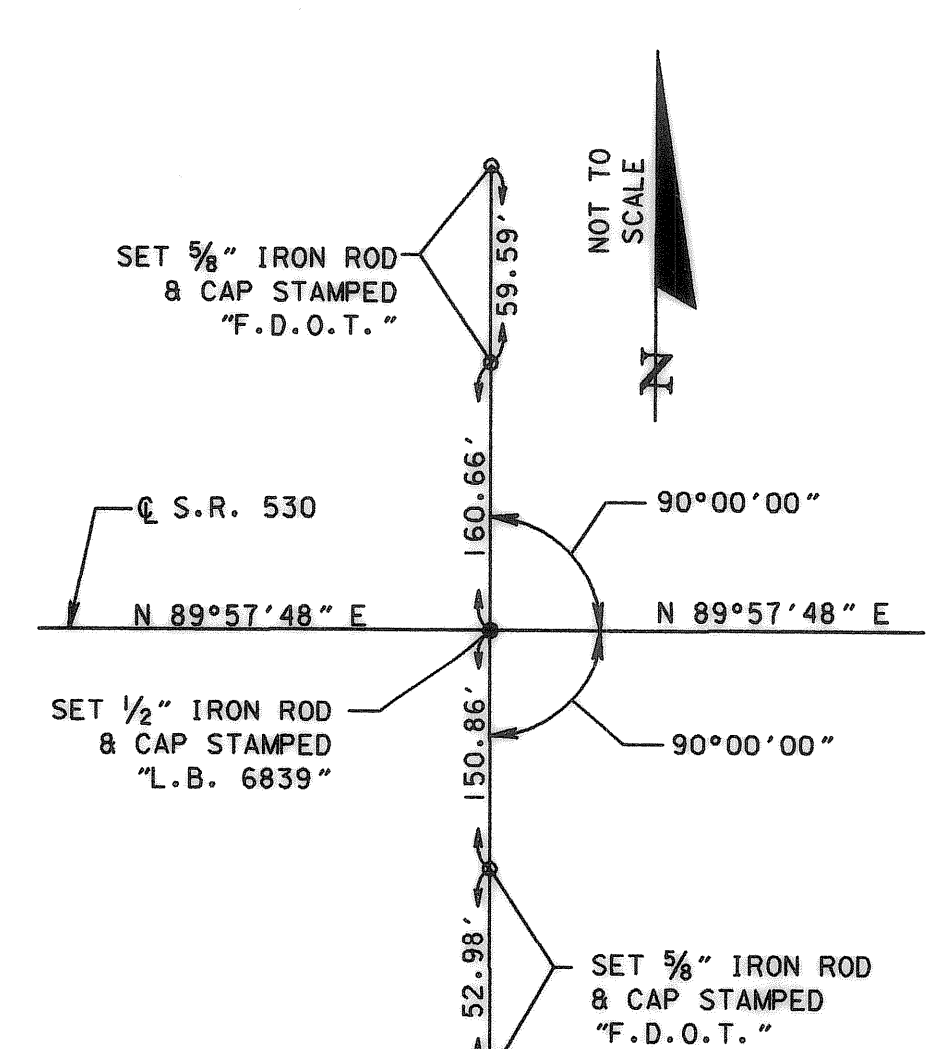
P.O.T. STA. 540+00.00
S.R. 530



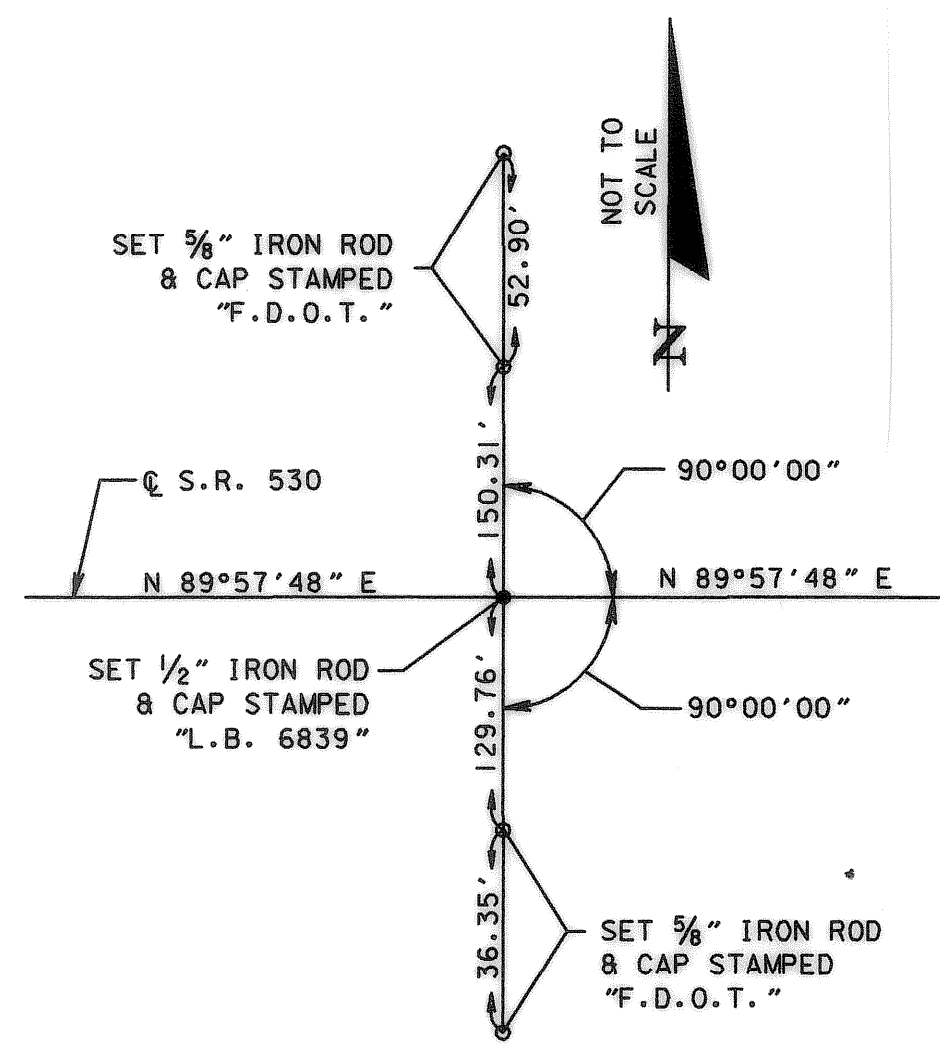
P.I. STA. 545+45.63
S.R. 530
 $\Delta = 00^{\circ}12'03''$ RT.



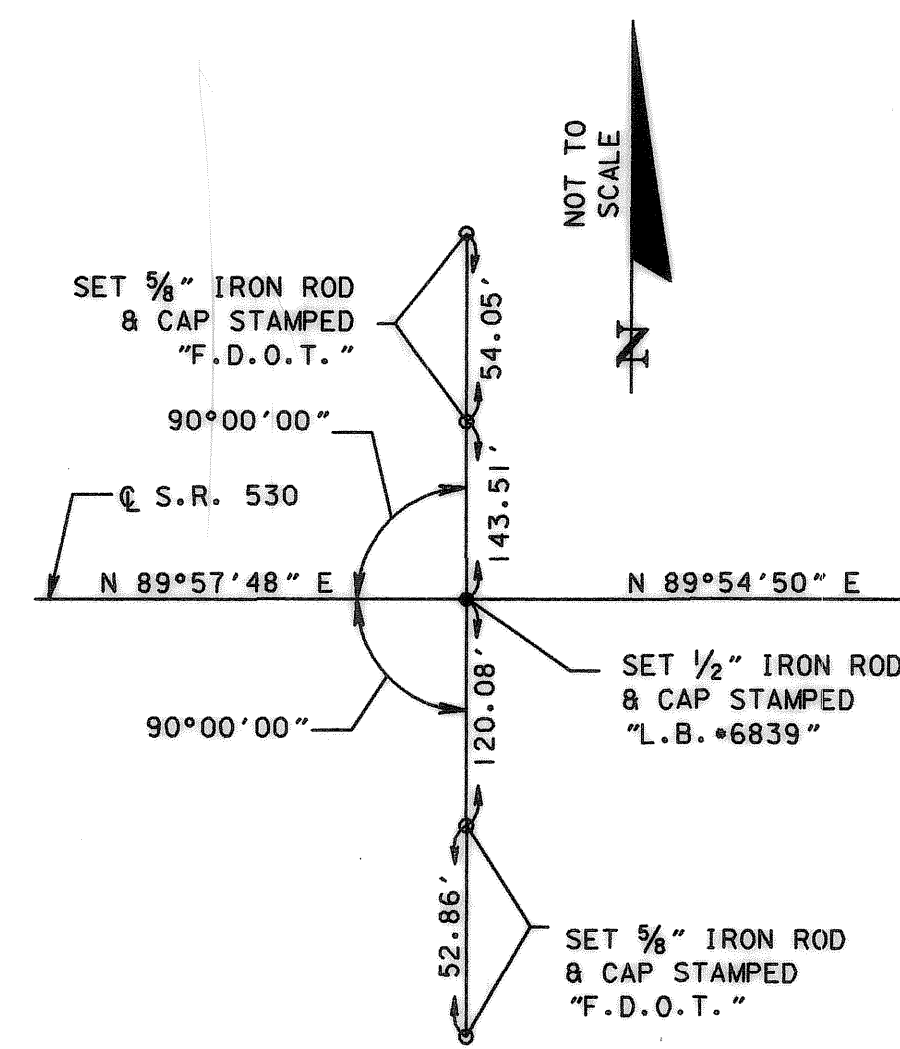
P.O.T. STA. 550+00.00
S.R. 530



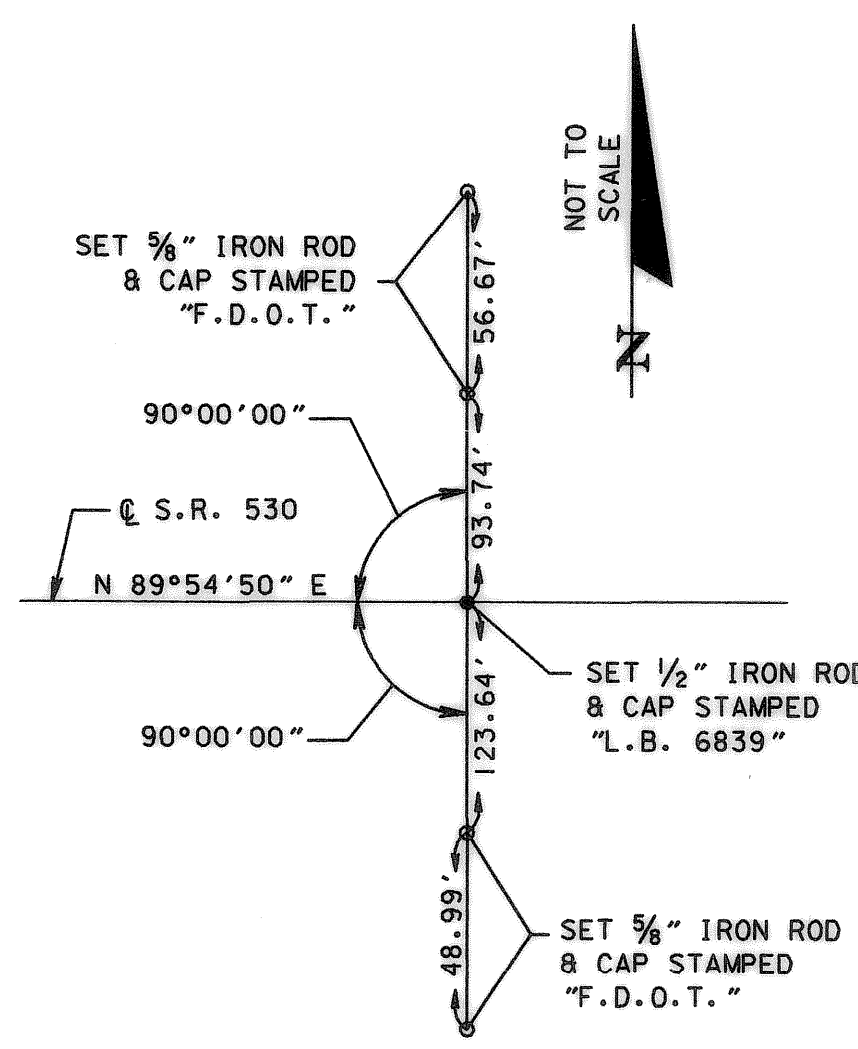
P.O.T. STA. 560+00.00
S.R. 530



P.O.T. STA. 570+00.00
S.R. 530



P.I. STA. 571+88.56
S.R. 530
 $\Delta = 00^{\circ}02'58''$ LT.



END SURVEY STA. 598+31.20
S.R. 530

RIGHT OF WAY MAP

FLORIDA DEPARTMENT OF TRANSPORTATION
RIGHT OF WAY MAPPING

APPROVED BY
Danaher
DATE 4-26-02
FOR DISTRICT SECRETARY

REVISION	BY	DATE	REVISION	BY	DATE

	BY	DATE
PRELIM	P. McGRAY	02/01
FINAL	D. KING	04/02
CHECKED	R. MARKS	04/02

F.A.P. NO. N/A
STATE ROAD NO. 400

SECTION 92130
OSCEOLA COUNTY

MAPS PREPARED BY URS CORPORATION	FIELD BOOK NO.'S SEE GENERAL NOTES ON SHEET ONE
W.P.I. NO. 5147335	SCALE: N/A
F.P. NO. 242531 I	SHEET 12 OF 13

THIS MAP IS NOT A SURVEY

STATE ROAD 400 (I-4) INTERCHANGE AT STATE ROAD 530 (US 192)